



Recognised by the IOC · Member SportAccord, ARISF, IWGA and IMGA



WDSF

COMPETITION

RULES

STATUS: JUNE 15, 2014 WDSF AGM, BUCHAREST, ROMANIA



LIST OF CONTENTS

Preamble

A. General

- Rule A.1 (Controlling Organization)
- Rule A.2 (Application)
- Rule A.3 (Control of the Regulations)
- Rule A.4 Authority of the Presidium
- Rule A.5 (Application of these Rules)
- Rule A.6 (Fees for WDSF Competitions)

B. Rules for Competition Production - in general

- Rule B.1 (Competition Types)
- Rule B.2 (Activity and Participation in Competitions)
- Rule B.3 (Granting of Competitions)
- Rule B.4 (Invitations)
- Rule B.5 (Reimbursement of Expenses)
- Rule B.6 (Production)

C. Rules for Chairmen and Adjudicators

- Rule C.1 (WDSF Chairmen and Adjudicators)
- Rule C.2 (WDSF Chairmen)
- Rule C.3 (Duties of WDSF Chairmen)
- Rule C.4 (WDSF Adjudicators)
- Rule C.5 (Duties of WDSF Adjudicators, Conflict of Interest)
- Rule C.6 (Dress Regulations for Chairman and Adjudicators)

D. Rules for Couples

- Rule D.1 (Membership)
- Rule D.2 (Couples)
- Rule D.3 (Doping Control and Doping Infringements)
- Rule D.4 (Advertising and Competition Numbers)

E. Rules for Competitions - Couples

- Rule E.1 (Partner)
- Rule E.2 (Age Restriction)
- Rule E.3 Music)
- Rule E.4 (Grades of Competitions)
- Rule E.5 (Choreography and Syllabus)
- Rule E.6 (Lifts)
- Rule E.7 (Prize Money)
- Rule E.8 (Rules for Adjudication)
- Rule E.9 (Health and Welfare of Athletes)
- Rule E.10 (Competition Dress)



F. Rules for Competitions - Formations

- Rule F.1 (Number of Couples)
- Rule F.2 (Music, Dances)
- Rule F.3 (Rehearsals)
- Rule F.4 (Draws)
- Rule F.5 (International Formation Competitions)
- Rule F.6 (Grades of Competition)
- Rule F.7 (Rules for Adjudication)
- Rule F.8 (Lifts)
- Rule F.9 (Competition Dress)

G. Rules for Competitions - Team Matches

- Rule G.1 (International Team Matches)
- Rule G.2 (Marking)
- Rule G.3 (Competition Dress)

H. Rules for Competitions - Showdance

- Rule H.1 (Character of Latin and Standard)
- Rule H.2 (Dances)
- Rule H.3 (Music)
- Rule H.4 (Lift)
- Rule H.5 (Holds)
- Rule H.6 (Rehearsal)
- Rule H.7 (Order of Performances)
- Rule H.8 (Lighting)
- Rule H.9 (International Showdance Competitions)
- Rule H.10 (Grades of Competition)
- Rule H.11 (Competition Number)
- Rule H.12 (Announcements)
- Rule H.13 (Adjudication System)
- Rule H.14 (Props/Accessories/Stage Decoration)
- Rule H.15 (Dress and/or Costume)
- Rule H.16 (Chairman and Invigilator)

X. Rules for Chairmen ´s and Adjudicator ´s licences

- Rule X.1 (WDSF Adjudicators Licences)
- Rule X.2 (Application for WDSF Adjudicators Licences)
- Rule X.3 (Granting of WDSF Adjudicators Licences)
- Rule X.4 (Use of WDSF Licences)
- Rule X.5 (Suspension or Revocation of WDSF Adjudicators Licences)

Y. Rules for Complaints and Objections

- Rule Y.1 (Complaints)
- Rule Y.2 (Objections)

Z. Final Regulations

- Rule Z.1 (Infringements)
- Rule Z.2 (Changes in the Competition Rules)



Appendix

Appendix WDSF Dress Regulations
Appendix Reimbursement of Expenses (Rule B 5)
Appendix Rules for Competition Number Cards
Appendix Rules for Hip Hop Competitions
Appendix Rules for Salsa Competitions
Appendix WDSF Athletes' Code of Conduct
Appendix WDSF Adjudicators' Code of Conduct



Preamble

The **WDSF Competition Rules** apply to DanceSport governed by the World DanceSport Federation and all of its Members.

They govern the activities of WDSF Member bodies and all persons who are members of such Member bodies or who are registered with or affiliated with such Member bodies. -

The principal purpose of any application and interpretation of these **Rules** is the best interests of WDSF.

Anti-doping

Doping is forbidden, according to the terms of the **WDSF Anti-Doping Code**.

The WDSF recognises the Anti-doping policies of the World Anti-Doping Agency (WADA) and adopts and applies a **WDSF Anti-Doping Code** corresponding to the WADA Anti-Doping Code. All participants in WDSF DanceSport, including couples, formations, Chairmen and Adjudicators, must abide by the **WDSF Anti-Doping Code** and all related WADA regulations and policies.

A. General

Rule A.1 (Controlling Organization)

- 1.1 The World DanceSport Federation (WDSF) is the governing body for all DanceSport competitions and athletes including competition at all levels, internationally and in each country including through that country's WDSF Member body. The only DanceSport competitions that WDSF does not claim to govern and maintain jurisdiction over are those specially declared to be excluded, or to be excluded for a period of time, by the authority of the WDSF Presidium.
- 1.2 The WDSF is the sole authority worldwide for the determination of amateur status.

Rule A.2 (Application)

- 2.1 These **Rules** apply to all DanceSport Competitions granted by WDSF, including but not limited to Standard, Latin-American, Teacher-Student, New Vogue, American Style, Freestyle, Rock 'n Roll, Old Time and Modern and Latin Sequence, provided always that: Rules for Teacher-Student DanceSport are administered by the WDSF Professional Division; Rules for Rock 'n Roll are administered by the WDSF Associate Member the World Rock 'n Roll Confederation; Rules for Baton Twirling are administered by International Baton Twirling Federation; Rules for Country and Line Dance are administered by United Country and Western Dance Council.
- 2.2 Every competitor who competes in a competition granted by WDSF must be a Member of or registered or affiliated with a WDSF Member body.



Rule A.3 (Control of the Regulations)

- 3.1 The WDSF Sports Director must ensure that these **Rules** are followed at competitions granted under these **Rules**. The Sports Director may delegate this responsibility to a Chairman.

Rule A.4 Authority of the Presidium

- 4.1 The WDSF Presidium is responsible for enforcing these **Rules**.
- 4.2 The Presidium shall have the authority to make decisions on matters not covered by these **Rules**.
- 4.3 The Presidium may impose supplementary rules for specific events.

Rule A.5 (Application of these Rules)

- 5.1 WDSF Member bodies are responsible for compliance with the **WDSF Competition Rules** in their respective countries and should use them as guidelines for their own rules.

Rule A.6 (Fees for WDSF Competitions)

- 6.1 The **WDSF Financial Regulations** include the maximum fees which may be charged from time to time by the Presidium for the granting of Championships, Cups and competitions under these **Rules** (also called "WDSF Competitions" in these **Rules**).

B. Rules for Producing Competition

Rule B.1 (Competition Types)

- 1.1 There are the following types of competition:
- 1.1.1 Individual competitions
 - 1.1.2 Team competitions
 - 1.1.3 Formation competitions
 - 1.1.4 Freestyle competitions

Rule B.2 (Eligibility and Participation in Competitions)

- 2.1 Athletes, couples, formation teams and teams may not participate in competitions which have not been previously approved in writing by the WDSF or a WDSF Member Federation or for which authorisation to compete has not been granted by the Presidium.



- 2.2 Subject to WDSF's **Statutes** and **Competition Rules**, and subject to the policies established by the General Meeting and any agreements or policies made by the Presidium, the admission of competitors to international or other competitions (including all amateur competitions) is governed by the relevant WDSF Member body.
- 2.3 In order for athletes to be eligible to compete in the following major WDSF Competitions:
- WDSF World Championships,
 - WDSF World Cups,
 - WDSF Continental Championships,
 - WDSF Continental Cups,
 - WDSF Grand Slams,
 - Asian Games,
 - Asian Indoor Games,
 - WDSF Games,
 - World Games, or
 - Any future Olympic level Games,

At the discretion of the WDSF National Member Body, athletes may be required to have only competed in the WDSF Competition System in the 12 months prior to the date of the respective event.

Rule B.3 (Granting of Competitions)

- 3.1 The WDSF Presidium grants the right to organize and produce WDSF Championships, Cups and competitions defined in these **Rules**; see also the **WDSF Financial** Regulations re: fees for such grants.
- 3.2 Except for International Invitation Competitions for couples and International Invitation Competitions for Formation Teams, the Presidium may not grant any of these Championships, Cups or competitions unless they have previously been offered to WDSF Member bodies in writing.
- 3.3 The Presidium may grant these Championships, Cups or competitions directly to bidders such as governments of cities or countries, subject to prior approval in writing by the WDSF Member body in the relevant country.
- 3.4 International Invitational Competitions must be registered with WDSF. The organization of these competitions shall be as freely decided by the national Member body.

Rule B.4 (Invitations)

- 4.1 Invitations to International Invitational Competitions must be arranged between the relevant WDSF Member bodies. Each invitation must contain the date of registration of the competition by WDSF.



Rule B.5 (Reimbursement of Expenses)

- 5.1 The minimum reimbursement of expenses required to be paid to competition couples, Chairmen and Adjudicators for WDSF World Championships, WDSF Open World Championships, WDSF Continental Championships, WDSF Subcontinental Championships, WDSF World Ranking Tournaments, WDSF World Cups, WDSF Continental Cups, WDSF World Formation Championships, WDSF Continental Formation Championships, International Invitational Competitions for Formation Teams, WDSF World Cups Formations and WDSF Continental Cups Formations, WDSF World Championships Showdance and WDSF Continental Championships Showdance may be set by the Presidium. The Presidium shall publish these minimum payments from time to time.

Rule B.6 (Production)

- 6.1 Follow Spotlights may not be used in any WDSF-granted competitions except as permitted under these Rules.
- 6.2 Follow spotlights may only be used during solo dances to illuminate each and every couple in the same way.
- 6.3 Any direct glare of the competing couple has to be avoided by suitable measures such as positioning the spotlights as high as possible.

C. Rules for Chairmen and Adjudicators

Rule C.1 (WDSF Chairmen and Adjudicators)

- 1.1. Under these **Rules** a Chairman (non-voting) or Adjudicator is from a country if he or she holds a valid and subsisting WDSF License issued by that country's WDSF Member body and is either a citizen of that country or resided in that country for at least 183 days during the twelve months previous to the date on in which the relevant competition is produced.

Rule C.2 (WDSF Chairmen)

- 2.1 A Chairman of Adjudicators (non-voting) appointed or confirmed by the WDSF Presidium is responsible for the supervision and control of every competition. When a Chairman has not been appointed by WDSF the organizer must appoint a Chairman (non-voting). The Chairman of every competition must hold a valid and subsisting WDSF Chairman's License at the time of that competition.

Rule C.3 (Duties of WDSF Chairmen)

- 3.1 The main function of the WDSF Chairman is to observe strict compliance with these **Rules** and other WDSF rules and regulations during WDSF Competitions.



- 3.2 The Chairman shall be familiar with these *Rules* and all other WDSF rules and regulations, the WDSF computer ranking list, the format of the Finals in WDSF Competitions and any document published by the WDSF Sports Director or the WDSF Presidium which is relevant to WDSF Competitions.
- 3.3 The Chairman is responsible to the WDSF Presidium.
- 3.4 The Chairman must hold a valid and subsisting WDSF Chairman's Licence.
- 3.5 The Chairman can serve only in a non-voting capacity. A scrutineer may not act as Chairman of Adjudicators.
- 3.6 The duty of the Chairman is to supervise and control WDSF Competitions under his or her supervision and to enforce these **Rules** and other WDSF rules and regulations, including as follows:
 - 3.6.1 To examine the dance floor, including its dimensions and quality.
 - 3.6.2 To ensure the readiness of the check-in team and the accuracy and completeness of registration forms.
 - 3.6.3 To check the readiness of scrutineers and the computer team and to check all forms used by adjudicators and scrutineers.
 - 3.6.4 To ensure that first-aid personnel are present at the competition venue.
 - 3.6.5 To check lighting and ensure that it is sufficient.
 - 3.6.6 To examine the athletes' changing rooms and ensure that their condition is satisfactory.
 - 3.6.7 To examine the adjudicators' changing rooms and ensure that VIPs and other guests have available for their use a separate hospitality room.
 - 3.6.8 To check the sound system and ensure that it has pitch control.
 - 3.6.9 To instruct the music maker ("the DJ) about correct tempi and duration of music.
 - 3.6.10 To check the assigned places for the Adjudicators and ensure that they have optimal conditions for their work.
 - 3.6.11 To check the positioning of the display board for all the results and heat allocations.
 - 3.6.12 To ensure that the scrutineering team is separated from the audience and any unauthorised visitors.
 - 3.6.13 To study the competition schedule and ensure that the breaks between rounds are not shorter than 20 minutes.
- 3.7 The duty of the Chairman with regard to Adjudicators is:
 - 3.7.1 To ensure that all the appointed Adjudicators are present at the venue before competition commences and to find a qualified substitute adjudicator if necessary.
 - 3.7.2 To meet with all Adjudicators before the start of the competition and instruct them on the specific circumstances of the competition and their duties.



Recognised by the IOC - Member SportAccord, ARISF, IWGA and IMGA

- 3.7.3 To ensure that Adjudicators are present in the competition hall at least 5 minutes before the commencement of each heat.
 - 3.7.4 To ensure that during breaks Adjudicators stay in an assigned room or separate area in the hall.
 - 3.7.5 To observe the behaviour of Adjudicators with regard to the **WDSF Adjudicators Code of Conduct and Ethics** ("the **Code**").
 - 3.7.6 To make all reasonable efforts to stop or prevent any unethical conduct by participants, coaches or spectators towards Adjudicators.
- 3.8 The duty of the Chairman during competition is:
- 3.8.1 To determine the number of heats and number of couples in each heat for every round, according to these **Rules**.
 - 3.8.2 To ensure that mixed heats are used beginning with the commencement of heats of 96 or fewer couples in WDSF ranking competitions and from the first round, including re-dance, in WDSF Championships.
 - 3.8.3 To limit the number of couples in a heat, if there is potential danger to any athletes' safety.
 - 3.8.4 To inspect the marks and confirm the number of couples qualified for the next round.
 - 3.8.5 To ensure that competitors dance in their assigned heats, and that all couples are on the floor for their heats.
 - 3.8.6 To ensure that the list of couples qualified for the next round is compiled according to starting number and displayed together with the heat assignment on the result board, before the commencement of the next round.
 - 3.8.7 During the breaks, check the scrutineers' work.
 - 3.8.8 To make decisions on any question that arises during the competition.
 - 3.8.9 To check the competition dress of all athletes before the commencement of the first round if possible or during the first round and ensure that all are in accordance with these **Rules**, and if any breach occurs to instruct the athlete who is in breach to comply with these **Rules** or face disqualification in the next round.
 - 3.8.10 To ensure that only the Chairman and the scrutineers have access to the marks until they are delivered to the competition organizer.
- 3.9 The duty of the Chairman at the end of the competition is:
- 3.9.1 Upon completion of the competition, to inspect all the marks and compilation sheets and ensure that the organizer submits them to the WDSF Sports Director within 48 hours.
 - 3.9.2 To write a report on the competition and send it to the WDSF Sports Director within 7 days.



- 3.9.3 To instruct the competition organizer to retain the original Adjudicators' marking sheets for inspection if required for a period of 30 days after the competition, after which they may be destroyed

Rule C.4 (WDSF Adjudicators)

- 4.1 A minimum of seven (7) WDSF Adjudicators shall officiate at WDSF World Championships, WDSF Open World Championships, WDSF Continental Championships, WDSF World Open Competitions, WDSF International Open Competitions and WDSF World Cups.
- 4.2 A minimum of five (5) WDSF Adjudicators shall officiate at WDSF Sub-Continental Championships, WDSF International Invitational Competitions, WDSF International Invitational Competitions for Formation Teams and WDSF Continental Cups.
- 4.3 A minimum of three (3) WDSF Adjudicators shall officiate at WDSF granted Team Matches.
- 4.4 Adjudicators must hold a valid and subsisting WDSF licence to judge any competitions governed by these **Rules** except International Invitational Competitions and International Invitational Competitions for Formation Teams.
- 4.5 For WDSF World Championships, WDSF Open World Championships, WDSF Continental Championships, WDSF Sub-Continental Championships, WDSF World Open Competitions, WDSF World Cups, WDSF Continental Cups, WDSF World Formation Championships, WDSF Continental Formation Championships, WDSF World Cups Formation, WDSF Continental Cups Formation, WDSF World Championships Showdance and WDSF Continental Championships Showdance, Adjudicators must be nominated by the WDSF Presidium.
- 4.6 For WDSF World Championships, WDSF Open World Championships, WDSF Continental Championships, WDSF Sub-Continental Championships, WDSF World Ranking Tournaments, WDSF World Cups, WDSF Continental Cups, WDSF World Formation Championships, WDSF Continental Formation Championships, WDSF World Cups Formation, WDSF Continental Cups Formation, WDSF World Championships Showdance and WDSF Continental Championships Showdance, each Adjudicator must be from a different country.
- 4.7 For all competitions the Adjudicators must be recognized by the WDSF Presidium.

Rule C.5 (Duties of WDSF Adjudicators, Conflict of Interest)

- 5.1 Adjudicators must evaluate the performance of the couples or formations in relation to each other and in accordance with valid WDSF adjudicating guidelines.
- 5.2 Adjudicating must not be influenced by earlier competition results, club membership, judging of other Adjudicators, the opinion of the couples, coaches or other persons.
- 5.3 The competition programme must not be used by Adjudicators during judging a competition.
- 5.4 Adjudicators may not discuss the performance of any athlete, couple or formation before or during any competition.
- 5.5 An Adjudicator shall not judge a competition, and shall retire from the panel adjudicating that competition, where any athlete competing in that competition is a member of that Adjudicator's immediate or extended family, including *de facto* relationships, or where that



Adjudicator has a personal relationship to or with any athlete competing in the competition which makes it inappropriate for that Adjudicator to serve as an Adjudicator. For greater clarity, the words "immediate and extended family" include anyone to whom the Adjudicator is related by blood or marriage, to the degree of first cousin or closer, or by adoption order, or with whom the judge lives or cohabits.

- 5.6 An athlete may not adjudicate or chair WDSF DanceSport competitions until after declaring in writing that he or she has ceased to compete.

Rule C.6 (Dress Regulations for Chairman and Adjudicators)

- 6.1 In all competitions granted under these **Rules**, Chairmen, Adjudicators and all other officials (including, but not limited to, any speaker, chairman, scrutineer or other manager) serve as a team and shall dress or costume as follows:

Men: black or midnight-blue business suit, dress shirt, WDSF necktie, dress shoes;

Women: black or midnight-blue business suit with either skirt or trousers, dress blouse, WDSF scarf.

D. Rules for Couples

Rule D.1 (Membership)

- 1.1 Each competitor in a WDSF Competition must be a Member of, or formally affiliated with, a WDSF Member body representing a country.

Rule D.2 (Couples)

- 2.1 Definition of a couple:

2.1.1 A couple consists of a male and a female partner.

- 2.2 Couples representing a country and couples of mixed citizenship.

2.2.1 A couple may only represent a country in any WDSF Championship or WDSF Cup if one of the partners holds a valid and subsisting passport of the represented country at the time of registration and the time of the relevant competition.

2.2.2 A couple may only represent a country at any other WDSF Competition if each partner is permitted to compete by the WDSF Member body representing that country at the time of registration and the time of the relevant WDSF Competition.

2.2.3 A competitor who has represented one country in any WDSF Championship or any WDSF Cup is not permitted to represent any other country in any WDSF Championship or WDSF Cup competition until a period of 12 months has elapsed since the last representation.

2.2.4 A competitor who has represented one country in any WDSF World Ranking Tournament or any Open Competitions governed by other rules is not permitted to represent another country in any WDSF World Ranking Tournament until a period of



eight (8) months has elapsed, except when that competitor has received prior consent in writing to the change in representation from each of the two relevant WDSF Member bodies, and then the competitor may immediately represent the new country. The period of eight (8) months referred to above starts with the last date on which the competitor represented the former country in a WDSF Competition governed by other rules. The WDSF Member body representing the newly-representing country must contact the athlete's former WDSF Member body to request agreement for the change of representation. If the former WDSF Member body does not reply within one month the athlete may register with the new WDSF Member body and represent the new WDSF Member body.

- 2.2.5 A competitor who has represented one country in any Championship or Cup in a different DanceSport system is not permitted to represent any country in any WDSF Championship or WDSF Cup competition until a period of 12 months has elapsed since the last representation.

2.3 Competitions under IOC Rules

- 2.3.1 In competitions of the IOC, OCA and the IWGA couples of mixed nationality are not permitted. According to the ***Olympic Charter*** a competitor represents his or her country. Each competitor must hold a valid and subsisting passport of the WDSF Member body's country represented at the time s/he is appointed to represent that country and at the time of the relevant IOC, OCA or IWGA competition. An athlete may only represent a country in IOC, OCA or IGWA competitions if s/he is permitted to compete by the WDSF Member body for that country and has been so permitted for a continuous period of six (6) months before the date of the relevant competition.

2.4 Athletes returning to WDSF DanceSport System

- 2.4.1 An athlete who has previously been registered in the WDSF DanceSport system or WDSF PD, who returns to the WDSF DanceSport system after competing or otherwise participating in a dancing system or dancing competition system which was not registered in the WDSF DanceSport system, may not represent any country or WDSF Member body in any WDSF competition until three (3) months after his or her most recent participation in a dancing competition that was not registered in the WDSF DanceSport system.
- 2.4.2 An adjudicator who holds a WDSF Adjudicator's Licence may resume competing as an athlete immediately after surrendering his or her WDSF Adjudicator's Licence to the WDSF Sports Director.

2.5 Registration and Identification of Athletes

- 2.5.1 All athletes participating in WDSF Championships, WDSF Cups and WDSF World Ranking Tournaments must be registered with WDSF in the WDSF Registration System. Only an athlete's WDSF Member body may apply for such registration.
- 2.5.2 All participants in WDSF-granted Competitions must be identified by a WDSF ID Card.
- 2.5.3 Each WDSF Member body is authorized to issue Athlete License Books or License Cards to its registered athletes.
- 2.5.4 Athlete License Books or License Cards must include a photograph of the athlete, according to forms and standards prescribed by the Presidium from time to time in an Operating Policy, as well as according to the requirements of relevant Government Sports Authorities.



Rule D.3 (Doping Control and Doping Infringements)

- 3.1 Doping Control and Doping Infringements
- 3.1.1 Doping Controls and the administration of Doping Infringements (disqualification, suspension) follow the Anti-Doping Rules of the WDSF and the World Anti Doping Agency (WADA).
- 3.1.2 Doping Infringements are punished under the jurisdiction of the WDSF.

Rule D.4 (Advertising and Competition Numbers)

- 4.1 Competition Number Cards may only be used if they comply with the requirements set out in Appendix to these Rules.
- 4.2 Advertising by up to four sponsors is allowed on a couple's competition costumes. A man or boy may advertise up to three sponsors, and a woman or girl may advertise only one sponsor. The size of the advertisement may be no more than 40 square cm for each sponsor. Such advertising may only be displayed and located on the waist, chest or sleeves. Each reproduction of any flag displayed on an athlete's costume constitutes one (1) sponsor for the purpose of this Rule.
- 4.3 Advertising on a couple's Competition Number Card may not exceed 20% of the size of the competition number on that card.
- 4.4 The size of couples' competition number card may not exceed DIN A5 plus 20 % reserved for advertising. Couples must accept the Competition Number Card as issued and may not tamper with or reduce the size of the number card.
- 4.5 The number on any Competition Number Card on WDSF Championships and/or Cups shall be a minimum of two Arabic numerals and may not exceed three numerals.

E. Rules for Competitions (Couples)

Rule E.1 (Partner)

- 1.1 Attachment to more than one partner in a given age division and dance style at the same time is not permitted.

Rule E.2 (Age Restriction)

- 2.1 The following age restrictions are obligatory in WDSF Competitions:

Juvenil I:	reach 9 th birthday or less in the calendar year
Juvenil II:	reach 10 th and 11 st birthday in the calendar year
Junior I:	reach 12 nd and 13 th birthday in the calendar year
Junior II:	reach 14 th and 15 th birthday in the calendar year
Youth:	reach 16 th , 17 th and 18 th birthday in the calendar year
Under 21:	reach 16 th to 20 th birthday in the calendar year
Adult:	reach 19 th birthday or more in the calendar year
Senior I:	one partner must have reached his or her 35 th birthday or more in the calendar year. The other partner must have reached her or his 30 th birthday or more in the calendar year
Senior II:	one partner must have reached his or her 45 th birthday or more in the calendar year. The other partner must have reached her or his 40 th birthday or more in the calendar year



- Senior III: one partner must have reached his or her 55th birthday or more in the calendar year. The other partner must have reached her or his 50th birthday or more in the calendar year
- Senior IV: one partner must have reached his or her 65th birthday or more in the calendar year. The other partner must have reached her or his 60th birthday or more in the calendar year, except in Open Competitions as follows:

Two age-groups may be combined in one competitive event, e.g. Juvenile I and II in one joint age group or Junior I and II in one joint age group.

Junior I couples may compete in Junior II competitions; Junior II couples may compete in Youth competitions.

Youth couples and Senior couples may compete in Adult competitions.

In all age groups one partner of a couple may be younger, except in the Senior age groups.

Rule E.3 (Music)

3.1 Time allowed and tempi

In all rounds of competitions the music played shall be a minimum of one and a half minutes duration and a maximum of two minutes. In the Paso Doble the music shall be played at least up to the second highlight and at maximum to the 3rd highlight, provided always that the Chairman may extend the maximum duration for any dance or dances if in his or her opinion a longer duration is necessary for fair adjudication of that dance or those dances in an event.

3.2 The tempi for each dance shall be:

Waltz	28 – 30 bars/min	Samba	50 – 52 bars/min
Tango	31 – 33 bars/min	Cha-Cha-Cha	30 – 32 bars/min
Viennese Waltz	58 – 60 bars/min	Rumba	25 – 27 bars/min
Slow Foxtrot	28 – 30 bars/min	Paso Doble	60 – 62 bars/min
Quickstep	50 – 52 bars/min	Jive	42 – 44 bars/min

3.3 Type of music

In all WDSF competitions the music must have the character of the dance being performed, for example no disco music may be played for Latin-American dances.

3.4 Dance order

The sequence of the dances in a WDSF Competition is compulsory except with the prior written approval of the WDSF Sports Director.

3.5 10 Dance Competitions

In 10 Dance competitions, all 10 dances are performed.



Rule E.4 (Grades of Competitions)

4.1 WDSF World Championship

4.1.1. Adult, Youth and Junior II

a) Types of competition

WDSF World Championships are held:

- aa) In the Standard dances
(Waltz, Tango, Viennese Waltz, Slow Foxtrot and Quickstep)
- ab) In the Latin American dances
(Samba, Cha-Cha-Cha, Rumba, Paso Doble and Jive)
- ac) Over ten dances (Standard and Latin American)

b) Invitations:
Invitations must be sent to all WDSF Member bodies.

c) Eligibility:
Every WDSF Member body has the right to nominate two couples.

WDSF World Ten-Dance Championships:
Only one couple may represent each Member body.

d) Reimbursement of expenses:
No travel expenses, two nights' hotel accommodations.
See also Rule B 5 and Appendix

4.1.2. Senior I

a) Types of competition

WDSF World Senior Championships are held:

- aa) In the Standard dances
(Waltz, Tango, Viennese Waltz, Slow Foxtrot and Quickstep)
- ab) In the Latin American dances
(Samba, Cha-Cha-Cha, Rumba, Paso Doble and Jive)

b) Invitations:
Invitations must be sent to all WDSF Member bodies.

c) Eligibility:
Every WDSF Member body has the right to nominate two couples.

d) Reimbursement of expenses:
No travel expenses, one night's hotel accommodation.
See also Rule B 5 and Appendix



4.2 WDSF Open World Championships

4.2.1 Senior I

a) Type of competitions:

Senior I Open World Championships are held:

aa) In the Ten Dances (Standard and Latin American)

b) Invitations:

Invitations must be sent to all WDSF Member bodies

c) Eligibility:

All couples of the highest competitive category of a WDSF Member body are eligible to participate, but a couple's application for entry may only be made by the relevant WDSF Member body.

d) Reimbursement of expenses:

No travel expenses, no hotel accommodation, provided that all couples advancing to the quarter-final shall be paid a minimum lump sum reimbursement of CHF 150,00. Reimbursement of WDSF Chairmen and WDSF Adjudicators shall be made by the Organizer according to Rule B 5 and Appendix.

4.2.2 Senior II

a) Type of competitions:

Senior II Open World Championships are held:

aa) In the Standard dances
(Waltz, Tango, Viennese Waltz, Slow Foxtrot and Quickstep)

ab) In the Latin American dances
(Samba, Cha-Cha-Cha, Rumba, Paso Doble and Jive)

ac) In the Ten Dances (Standard and Latin American)

b) Invitation:

Invitations must be sent to all WDSF Member bodies

c) Eligibility:

All couples of the highest competitive category of a WDSF Member body are eligible to participate, but a couple's application for entry may only be made by the relevant WDSF Member body.

d) Reimbursement of expenses:

No travel expenses, no hotel accommodation, provided that all couples advancing to the quarter-final shall be paid a minimum lump sum reimbursement of CHF 150,00. Reimbursement of WDSF Chairman and WDSF Adjudicators shall be made by the Organizer according to Rule B 5 and Appendix.



4.2.3 Senior III

- a) Type of competitions:

Senior III Open World Championships are held:

- aa) In the Standard dances
(Waltz, Tango, Viennese Waltz, Slow Foxtrot and Quickstep)

- b) Invitation:
Invitations must be sent to all WDSF Member bodies

- c) Eligibility:
All couples of the highest competitive category of a WDSF Member body are eligible to participate, but a couple's application for entry may only be made by the relevant WDSF Member body.

- d) Reimbursement of expenses:

No travel expenses, no hotel accommodation, provided that all couples advancing to the quarter-final shall be paid a minimum lump sum reimbursement of CHF 150,00. Reimbursement of WDSF Chairman and WDSF Adjudicators shall be made by the Organizer according to Rule B 5 and appendix.

4.2.3 Senior IV

- a) Type of competitions:

Senior IV Open World Championships are held:

- aa) In the Standard dances
(Waltz, Tango, Viennese Waltz, Slow Foxtrot and Quickstep)

- b) Invitation:
Invitations must be sent to all WDSF Member bodies

- c) Eligibility:
All couples of the highest competitive category of a WDSF Member body are eligible to participate, but a couple's application for entry may only be made by the relevant WDSF Member body.

- d) Reimbursement of expenses:
No travel expenses, no hotel accommodation, provided that all couples advancing to the quarter-final shall be paid a minimum lump sum reimbursement of CHF 150,00. Reimbursement of WDSF Chairman and WDSF Adjudicators shall be made by the Organizer according to Rule B 5 and appendix.

4.2.5 Youth U21

- a) Type of competitions:

Youth U21 Open World Championships are held:

- aa) In the Standard dances
(Waltz, Tango, Viennese Waltz, Slow Foxtrot and Quickstep)



Recognised by the IOC - Member SportAccord, ARISF, IWGA and IMGA

- ab) In the Latin American dances
(Samba, Cha-Cha-Cha, Rumba, Paso Doble and Jive)
- ac) Over ten dances (Standard and Latin American)

- b) Invitation:
Invitations must be sent to all WDSF Member bodies

- c) Eligibility:
All couples of the highest competitive category of a WDSF Member body are eligible to participate, but a couple's application for entry may only be made by the relevant WDSF Member body.

- d) Reimbursement of expenses:
No travel expenses, no hotel accommodation, provided that all couples advancing to the quarter-final shall be paid a minimum lump sum reimbursement of CHF 150,00. Reimbursement of WDSF Chairman and WDSF Adjudicators shall be made by the Organizer according to Rule B 5 and Appendix.

4.3 WDSF Continental Championships

Adult and youth

- a) Types of competition

WDSF Continental Championships are held:

- aa) In the Standard dances
(Waltz, Tango, Viennese Waltz, Slow Foxtrot and Quickstep)
- ab) In the Latin American dances
(Samba, Cha-Cha-Cha, Rumba, Paso Doble and Jive)
- ac) 10-Dance (Standard and Latin American)

- b) Invitations:
Invitations must be sent to all WDSF Member bodies in the relevant continent. For this purpose Israel is counted as a part of Europe.

- c) Eligibility:
Every WDSF Member body has the right to nominate two couples except that in WDSF Continental Ten-Dance Championships only one couple may represent each Member body.

- d) Reimbursement of expenses:
See Rule B 5 and Appendix.

4.4 WDSF Sub-Continental Championships

- a) Types of competition

Sub-continental championships are held:

- aa) In the Standard dances
(Waltz, Tango, Viennese Waltz, Slow Foxtrot and Quickstep)
- ab) In the Latin American dances
(Samba, Cha-Cha-Cha, Rumba, Paso Doble and Jive)
- ac) Over ten dances (Standard and Latin American)



- b) **Invitations:**
Invitations must be sent to all WDSF Member bodies in the relevant Sub-Continent. Couples from other Sub-Continents may not be invited.
- c) **Eligibility:**
Each invited Member body has the right to nominate two couples. The organizer may invite one further couple from each participating country.
- d) **Reimbursement of expenses:**
See Rule B 5 and Appendix.

4.5 WDSF World Ranking Tournaments

4.5.1 There are 4 categories of WDSF World Ranking Tournaments:

- a) **WDSF Grand Slam**
WDSF will conduct a series of WDSF Grand Slam Competitions in Standard and Latin American, with prize-money and points for the WDSF Computer World Ranking List and a Grand Slam Final, as authorized by the Managing Committee.
- b) **WDSF World Open**
WDSF will conduct a series of WDSF World Open Competitions in Standard and Latin, called "WDSF World Open" with prize-money and points for the WDSF Computer World Ranking List, as authorized by the Presidium.
- c) **WDSF International Open**
WDSF will conduct a series of WDSF International Open Competitions in Standard and Latin with points for the WDSF Computer World Ranking List, as authorized by the Presidium.
- d) **WDSF Open**
WDSF will conduct a series of WDSF Open Competitions in Standard and Latin with points for the WDSF Computer World Ranking List, as authorized by the Presidium.

4.5.2 Detailed regulations for the conduct of these tournaments will be issued from time to time by the Presidium.

4.6 International Invitational Competitions

- a) **Definition:**
Except for International Team Matches and Formation Competitions a competition may only be described as an "International Competition" if it involves couples from at least four WDSF Member bodies.
- b) **Invitations:**
Invitations must be sent only to WDSF Member bodies unless decided otherwise by the Presidium.
- c) **Reimbursement of expenses:**
The reimbursement of participants shall be subject to agreement between the Member bodies.



4.7 WDSF World Cups

- a) Types of competition

WDSF World Cups are held:

- aa) In the Standard dances
(Waltz, Tango, Viennese Waltz, Slow Foxtrot and Quickstep)
 - ab) In the Latin American dances
(Samba, Cha-Cha-Cha, Rumba, Paso Doble and Jive)
 - ac) Over ten dances (Standard and Latin American)
- b) Invitations:
Invitations must be sent to all WDSF Member bodies.
- c) Eligibility:
Only one couple from each invited Member body.
- d) Reimbursement of expenses:
See Rule B 5 and Appendix.

4.8 WDSF Continental Cups

- a) Types of competition

WDSF Continental Cups are held:

- aa) In the Standard dances
(Waltz, Tango, Viennese Waltz, Slow Foxtrot and Quickstep)
 - ab) In the Latin American dances
(Samba, Cha-Cha-Cha, Rumba, Paso Doble and Jive)
 - ac) Over ten dances (Standard and Latin American)
- b) Invitations:
Invitations are to be sent to all WDSF Member bodies in the relevant continent. For this purpose Israel is counted as part of Europe.
- c) Eligibility:
Only one couple from each invited Member body.
- d) Reimbursement of expenses:
See Rule B 5 and Appendix

4.9 Open Competitions

- a) Types of competitions:

WDSF Open Competitions are held:

- aa) In the Standard dances
(Waltz, Tango, Viennese Waltz, Slow Foxtrot and Quickstep)
- ab) In the Latin American dances
(Samba, Cha-Cha-Cha, Rumba, Paso Doble and Jive)
- ac) Over ten dances (Standard and Latin American)



- b) Eligibility:
Only athletes who are members of or affiliated with WDSF Member bodies. Couples from countries and bodies not affiliated in the WDSF may only participate at the WDSF Presidium's discretion.
- c) Rising Star Competitions
Open Competitions with the status "Rising Stars" can be held as "WDSF Open Rising Stars Competitions" in the Adult age group. Couples in places 1 to 50 of the current WDSF Computer World Ranking List may not participate in these "WDSF Open Rising Stars Competitions".

Rule E.5 (Choreography and Syllabus)

- 5.1 Subject to these **Rules**, all choreographies in all ten dances in all WDSF granted championships, cups and other competitions, are open choreographies.
- 5.2 In all competitions governed by this Rule E.4 there is a uniform restricted syllabus for all Juvenile age groups, which is prepared and amended from time to time by a Commission of the WDSF Presidium and is effective for one year after publication by circular to all WDSF Member bodies.
 - 5.2.1 In all competitions the Syllabus must be invigilated by a minimum of one qualified Invigilator who shall be appointed by the WDSF Member body governing DanceSport in the country where the competition is produced, but whose appointment must be confirmed by the WDSF Presidium.
 - 5.2.2 In all competitions the Invigilator reports to the Chairman. If a couple breaches the Syllabus restrictions in the first round of a competition, the Chairman shall warn them, and if they breach the Syllabus in the next round or final, the Chairman shall disqualify the couple.

Rule E.6 (Lifts)

- 6.1 Lifts are not permitted in either category.

A lift is any movement during which one member of a couple has both feet off the floor at the same time with the assistance or support of the other partner.
- 6.2 The chairman may disqualify couples who perform lifts during competition.

Rule E.7 (Prize Money)

- 7.1 In WDSF DanceSport Competitions prize money can be paid up to the amount of prize money paid by WDSF from time to time in WDSF World Open competitions, provided always that an organizer may offer more prize money than in WDSF World Open with the prior written approval of the WDSF Presidium.



Rule E.8 (Rules for Adjudication)

8.1 Marking

8.1.1 Closed marking shall be used in the finals of competitions. Open marking is not permitted at WDSF Competitions except to display couples' places in each dance, and is not permitted to display the individual placing of each couple by each Adjudicator of the dances, however the organizer may seek permission from the Chairman to use the Open Marking System.

8.1.2 The Skating System shall be used.

8.2 Selection of Heats; Semi-Finals and Finals

8.2.1 WDSF World Championships, WDSF Open World Championships, WDSF Continental Championships, WDSF Sub-Continental Championships, WDSF World Ranking Tournaments, WDSF World Cups, WDSF Continental Cups and Open Competitions shall comprise at least a first round, semi-final and final.

8.2.2 Starting with the first round, the selection of all heats shall be random but not rotating through the five dances, but from the "96-round" the selection of all heats shall be random and rotating.

8.2.3 The semi-final must always be danced in two heats in WDSF World Championships, WDSF Open World Championships and WDSF Continental Championships.

8.2.4 The semi-final of any competition must be danced in two heats on a floor with an area of less than 250 square metres.

8.2.5 No more than 10 couples may dance in each heat of a competition round, up to the quarter-final in WDSF World Championships, WDSF Open World Championships and WDSF Continental Championships.

8.2.6 In WDSF Championships and WDSF Cups with an entry of more than 20 couples, except for Ten Dance, the re-dance system shall apply from the first round. Two qualifying rounds shall be held to allow all couples the opportunity to dance twice. In WDSF World Ranking Tournaments the "Regulations for WDSF World Ranking Tournaments" shall be observed. The Chairman shall decide the number of couples to be recalled from both qualifying rounds.

8.2.7 At least 50 % of the participating couples shall be recalled to the next round (excluding the Final) except in 10-Dance, in which at least two-thirds of the participating couples shall be recalled only after the first round to the next round; provided always that this provision does not apply for WDSF World Ranking Tournaments.

8.2.8 Ten-Dance Competitions shall comprise no more than first round, quarter-final, semi-final and final.

8.2.9 In Finals Adjudicators shall place couples. "1" is the best place marking. The same placing must not be given to more than one couple.

8.2.10 In WDSF World Championships, WDSF Open World Championships, WDSF Continental Championships, WDSF Sub-Continental Championships, WDSF World Ranking Tournaments, WDSF World Cups, WDSF Continental Cups and Open Competitions, no more than 6 couples should participate in the final, but if more than 6 couples qualify, the Chairman will decide on the number of participants.



8.3 Revised Competition Format

8.3.1 In all WDSF World and WDSF Continental Championships (only age group "Adult") the "Revised Competition Format" must be used. It may also be used in all WDSF Competitions (only Adult age group) if the WDSF Member body applies to use this format.

8.3.2 "Revised Competition Format" in the Standard and the Latin Discipline means the provision of two (2) solo dances, one (1) at the beginning and another one (1) at the end of the final. Solo dances means that each couple performs for one (1) full minute in each solo dance beginning from the first step of that performance. After the solo dances, all couples return to the floor for a further one (1) full final minute of group competition in that dance, beginning from the last couple commencing with their performance in that dance.

8.3.3 "Revised competition format" in the Ten-Dance Discipline means the provision of one (1) solo dance per discipline at the end of the finals. Solo dances means that each couple performs for one (1) full minute in each solo dance beginning from the first step of that performance. After the solo dances, all couples return to the floor for a further one (1) full final minute of group competition in that dance, beginning from the last couple commencing with their performance in that dance.

The solo dances in the Ten Dance discipline are fixed as Quick Step in Standard and Jive in Latin.

8.3.4 The order of couples in the solo dances of the final of the "Revised Competition Format" must be chosen by random selection, either manually or by randomized computer selection under the Chairman's supervision.

8.4 New Judging System

8.4.1 The WDSF New Judging System ("NJS") is the foundation for future developments in adjudication in WDSF, as set out in the appendix to these *Rules*.

8.4.2 At the discretion of the WDSF Sports Director, the NJS also may be applied for all WDSF Championships and WDSF Cups. Any other rules for adjudication which are inconsistent with the NJS shall not be in force in any WDSF Championship or WDSF Cup in which the NJS is applied.

8.5 In WDSF World Championships, WDSF Open World Championships, WDSF Continental Championships, WDSF Sub-Continental Championships, WDSF World Ranking Tournaments, WDSF World Cups and WDSF Continental Cups, the organizer must display marking sheets upon conclusion of the competition.

Rule E.9 (Health and Welfare of Athletes)
--

9.1 There must be a break of at least 20 minutes between the rounds of a competition.

9.2 Finals for Juveniles, Juniors

9.2.1 All Finals and prize presentations for Juvenile athletes must be concluded before 21:00 (9:00 P.M.)

9.2.2 All Finals and prize presentations for Junior I athletes must be concluded before 22:00 (10:00 P.M.)



- 9.2.3 All Finals and prize presentations for Junior II athletes must be concluded before 23:00 (11:00 P.M.)

Rule E.10 (Competition Dress)

- 10.1 In all competitions granted under these **Rules**, competitors shall dress or costume according to the **WDSF Dress Regulations**, which form a part of these **Rules**.
- 10.2 Each athlete may change costume up to three (3) times in all of the rounds of any competition, provided always that no change of dress, or additional use of accessories or colours, is permitted during any round of a competition.
- 10.3 The Chairman, or the WDSF Sports Director, may disqualify any couple at a competition when either partner is not dressed or costumed according to these **Rules**, and in addition to its other powers under the **WDSF Statutes** the Presidium may suspend from competitions for a limited period of time any competitor who breaches this Rule.

F. Rules for Competitions (Formations)

Rule F.1 (Number of Couples)

- 1.1 In all Formation competitions teams shall consist of six, seven or eight couples. No person may dance in more than one team in the same event.
- 1.2 In all Formation competitions at least 12 competitors per team must hold a valid and subsisting passport of the represented WDSF Member country at the time s/he is appointed to represent that Member and at the time of the relevant Championship or Cup.
- 1.3 At any stage in a competition 4 team Members may be replaced by up to 4 reserves.

Rule F.2 (Music, Dances)

- 2.1 Teams in the Standard category must base their routines on the Waltz, Tango, Viennese Waltz, Slow Foxtrot and Quickstep with an optimal maximum of 16 bars of music in any dance including Latin American.
- 2.2 Teams in the Latin American category must base their routines on the Samba, Cha-Cha-Cha, Rumba, Paso Doble and Jive and any other Latin American rhythm with an optional maximum of 16 bars of music in any dance, including Standard dances.
- 2.3 Solo performances in the Standard category shall be restricted to 8 bars in any one dance used with a maximum of 24 bars of music over the whole presentation, except for the Latin American dances in which solo performance is normally a part.
- 2.4 No formation team shall dance a routine exceeding 6 minutes including entry and exit. Of these 6 minutes, no more than 4½ minutes shall be judged and must be clearly identified in recognisable fashion at the beginning and end.
- 2.5 Tapes or other audio systems shall be used.
- 2.6 Teams not complying with these requirements may be disqualified by the Chairman.



Rule F.3 (Rehearsals)

- 3.1 A Chairman must be appointed. The Chairman must attend rehearsals and warn any team breaching the **Rules**. If the **Rules** are breached during the competition, the Chairman may disqualify the team(s).
- 3.2 Adequate arrangements must be made for non-public team rehearsals before the competition.
- 3.3 An equal amount of time at least 15 minutes long must be allocated to each team in the hall with appropriate music.
- In Formation competitions with different dance directions within the same event an equal amount of time at least 20 minutes long must be allocated to each team in the hall with appropriate music.
- 3.4 During the rehearsal the entire choreography including entry and exit must be performed at least once with music to promote conformity with these **Rules**.
- 3.5 The dance routine and music performed or practised at the rehearsal are the only movements and music permitted during the competition. The music tempo may only be changed once in the first round of the competition.

Rule F.4 (Draws)

- 4.1 In each round the starting order must be drawn under the scrutiny of the Chairman.

Rule F.5 (International Formation Competitions)

- 5.1 Formation Competitions may be held in two styles:
- a) in the Standard dances,
 - b) in the Latin American dances

Rule F.6 (Grades of Competition)

6.1 WDSF World Formation Championships (only adult)

- a) Types of competition

WDSF World Formation Championships are held:

- aa) In the Standard dances
(Waltz, Tango, Viennese Waltz, Slow Foxtrot and Quickstep)
- ab) In the Latin American dances
(Samba, Cha-Cha-Cha, Rumba, Paso Doble and Jive)

- b) Invitations:
Invitations must be sent to all WDSF Member bodies.

- c) Eligibility:
Two teams of each category must be invited from each Member body.



- d) Reimbursement of expenses:
No travel expenses, two nights´ hotel accommodations.
See Rule B 5 and Appendix.

6.2 WDSF Continental Formation Championships (only Adult category)

WDSF continental championships are held:

- aa) In the Standard dances
(Waltz, Tango, Viennese Waltz, Slow Foxtrot and Quickstep)
- ab) In the Latin American dances
(Samba, Cha-Cha-Cha, Rumba, Paso Doble and Jive)
- b) Invitations:
Invitations must be sent to all WDSF Member bodies in the relevant continent. For this purpose Israel is counted as a part of Europe.
- c) Eligibility:
Two teams of each category must be invited from each Member body.
- d) Reimbursement of expenses:
No travel expenses, two nights´ hotel accommodations.
See Rule B 5 and Appendix.

6.3 International Invitational Competitions for Formation Teams

- a) A competition may only be described as an “International Invitational Formation Competition” if it involves formation teams from at least four WDSF Member bodies.
- b) Invitations
Invitations must be sent only to WDSF Member bodies unless decided otherwise by the Presidium.
- c) Reimbursement of expenses
The reimbursement of participants shall be subject to agreement between the Member bodies.

6.4 WDSF World Cups Formation (only Adult category)

- a) Types of competition

WDSF World Cups are held:
 - aa) In the Standard dances
(Waltz, Tango, Viennese Waltz, Slow Foxtrot and Quickstep)
 - ab) In the Latin American dances
(Samba, Cha-Cha-Cha, Rumba, Paso Doble and Jive)
- b) Invitations:
Invitations must be sent to all WDSF Member bodies.
- c) Eligibility:
Only one formation team may be accepted from each Member body.



- d) Reimbursement of expenses:
No travel expenses, two nights' hotel accommodations.
See Rule B 5 and Appendix.

6.5 WDSF Continental Cups Formations (only adult)

- a) Types of competition

WDSF Continental Cups are held:

- aa) In the Standard dances
(Waltz, Tango, Viennese Waltz, Slow Foxtrot and Quickstep)
- ab) In the Latin American dances
(Samba, Cha-Cha-Cha, Rumba, Paso Doble and Jive)
- b) Invitations:
Invitations must be sent to all WDSF Member bodies in the relevant continent. For this purpose Israel is counted as part of Europe.
- c) Entitlement to participate:
Only one formation team will be accepted from each invited Member body.
- d) Reimbursement of expenses:
No travel expenses, two nights' hotel accommodations.
See rule B 5 and Appendix.

Rule F.7 (Rules for Adjudication)

- 7.1 International formation competitions shall comprise at least a first round, semi-final and final.
- 7.2 When there are more than 5 teams in a competition a second round must be held.
- 7.3 In all intermediate and final rounds no fewer than half of all the formations from the previous round may participate.
- 7.4 In the final, a maximum of 6 formation teams may participate, or a maximum of 7 in the event of a tie in the previous round.
- 7.5 Formation teams which receive the majority of marks must be promoted to the next round.
- 7.6 Formations must be listed in the judging sheets in the same sequence as the starting order. Open marking must also be called in this order.
- 7.7 Only Adjudicators experienced in adjudicating formation competitions must be selected to adjudicate competitions under these **Rules**. At least 7 Adjudicators from 7 different WDSF Member bodies must be engaged.
- 7.8 In finals Adjudicators shall rank formations. 1st is the best ranking. The same ranking must not be given to more than one formation.
- 7.9 Organizers must display marking sheets upon conclusion of the competition.



Rule F.8 (Lifts)

8.1 Lifts are not permitted in either category.

A lift is any movement during which one member of a couple has both feet off the floor at the same time with the assistance or support of the other partner.

8.2 The Chairman may disqualify teams any members of which perform lifts during their judged dance performance.

Rule F.9 (Competition Dress)

9.1 In all formation competitions granted under these **Rules**, competitors shall dress or costume according to the **WDSF Dress Regulations**, which form a part of these **Rules**.

9.1.1 Standard section: Men's dress must be black or midnight-blue.

9.1.2 Latin section: Men's dress in colours is permitted, but all men in a team must wear the same colour of dress. No properties are allowed.

9.2 No change of dress, or use of accessories or colours, is permitted during the competition

9.3 The Chairman, or the WDSF Sports Director, may disqualify any formation team at the competition which is not dressed or costumed according to this **Rule**, and in addition to its other powers under the **WDSF Statutes** the Presidium may suspend from competitions for a limited period of time any formation team which breaks this **Rule**.

G. Rules for Competitions (Team Matches)

Rule G.1 (International Team Matches)

1.1 International Team Matches

a) Types of competitions:

International Team Matches are held:

aa) In the Standard dances
(Waltz, Tango, Viennese Waltz, Slow Foxtrot and Quickstep)

ab) In the Latin American dances
(Samba, Cha-Cha-Cha, Rumba, Paso Doble and Jive)

b) Invitations:

International Team Matches are subject to arrangement between the WDSF Member bodies, but may only be held once in any year in the same country and between the same WDSF Member bodies.

c) Eligibility (Definition of a team):

Each team must consist of at least four couples chosen according to the relevant WDSF Member body's ranking and must not be varied during the competition.



- d) Reimbursement of expenses:
The reimbursement of participants shall be as agreed between the relevant WDSF Member bodies.

Rule G.2 (Marking)

- 2.1 In each round open marking shall be used, to assess couples as 1, 1 1/2, 2, 2 1/2, 3. "1" being the best mark.
- 2.2 For equal performance, identical marking may be given.
- 2.3 In all dances the same couples must always dance against each other. Interchange of couples is not allowed.
- 2.4 The marks shall be added together to produce a result.

Rule G.3 (Competition Dress)

- 3.1 According to *WDSF Dress Regulations*.

H. Rules for Competitions (Showdance Competitions)

Rule H.1 (Character of Latin and Standard)

- 1.1 A show dance may never suppress the character of the Latin and/or Standard dances. The minimum requirement is that the show dance is in balance with the Latin and/or Standard character.
- 1.1 A Showdance may never suppress the balance between Latin and Standard character.

Rule H.2 (Dances)

- 2.1 Dances

In Latin and Standard Showdance competitions the dances must be selected from a minimum of three (3) up to a maximum of five (5) regular Standard or Latin dances. Elements from other dances may be used to enrich and complete the choreography, with respect to the character of Latin and Standard dances (refer to Rule H 1).The character of Standard and Latin dances must be clearly recognizable.

- 2.2 Elements of other dances and dance forms may be included up to a maximum of 25% of the duration of the performance.

Rule H.3 (Music)

- 3.1 Music

Competitors must provide the Organizers with:

- a) 2 copies of a compact disc ("CD") recording of their selected music, and
- b) a full, accurate and current list of selected titles on the CD or CDs including title(s), composer(s), arranger(s), publisher(s) and CD or record number(s).



3.2 Time Limit

The duration of the performance shall be between 3:30 and 4:00 minutes, including entrance and exit performances, starting when the first partner of the couple enters the floor and ending when the last partner of the couple has left the floor. This duration may never be exceeded. The entrance and the exit of the athletes should not exceed 15' each.

The Chairman shall disqualify any couple who exceed these time limits.

The music maker must start the music for the performance no later than 15 seconds after the performance begins.

3.3 The duration of music must be a minimum of 3 minutes and a maximum of 3:30 minutes, excluding the couple's entrance and exit.

Rule H.4 (Lifts)

4.1 A lift is any movement during which one member of a couple has both feet off the floor at the same time with the assistance or support of the other partner.

4.2 Lifts Standard

4.2.1 A maximum of three (3) lifts is permitted during each performance.

4.2.2 Each lift may not exceed 15 seconds in duration, including the lead in and the lead out of the lift.

4.3 Lifts Latin

4.3.1 A maximum of three (3) lifts is permitted during each performance.

4.3.2 Each lift may not exceed 15 seconds in duration.

Rule H.5 (Holds)

5.1 Holds Standard. Definition of hold:

- Man's left hand takes Lady's right hand
- Man's right hand is placed on Lady's left shoulder blade
- Lady's left hand is placed over lower end of Man's right deltoid muscle.

5.1.1 A 30-second period at the beginning of the performance and a further 30-second period at the end may be danced without a hold or in any other style of hold subject always to the Chairman's discretion to prohibit holds that could be dangerous, injurious or offensive.

5.1.2 Once a hold is established after the separation during the beginning of the performance, a couple may further release holds for a maximum continuous duration of 15 seconds, a maximum of two times during the performance.

5.1.3 There is not allowed two consecutive separations without hold.



Rule H.6 (Rehearsals)

- 6.1 Organizers must grant each couple an opportunity to conduct a full rehearsal on the proposed competition floor, at a reasonably convenient time, for a minimum of 10 minutes' rehearsal time, to test the competition floor and the Organizer's production of the couple's selected music.

Every couple should be present a minimum of 15 minutes before they start their rehearsal.

- 6.2 All athletes, all WDSF Chairmen, the WDSF Invigilator, and all camera operators, sound engineers, and lighting engineers must be present for the duration of all such rehearsals.

- 6.3 All shows will be filmed under rehearsal and during the show to be used only as information in any decision about violations of these **Rules**. The Chairman must disqualify any couple who fail to appear for any rehearsal.

- 6.4 During a rehearsal the invigilator shall judge the dances based on any rules and regulations set by WDSF. In case of a violation of one or more of such rules and regulations the invigilator shall inform the respective couple, so they can make adjustments to their show.

6.4.1 All athletes must be aware that their performances should have been reviewed by the National Invigilators in their National Championships and that their performance is in accordance with the WDSF Rules and Regulations for Showdance, prior to their participation in WDSF Showdance Championships.

- 6.5 Except for the above-mentioned changes in a Showdance all dancers must show the same show and choreography throughout the rehearsal and the competition. During the rehearsal and all competition rounds, the same dresses and costumes must be used and the lighting and music shall be the same.

- 6.6 If a technical problem with the music occurs during a Showdance, the affected couple must be given the opportunity to demonstrate once more after the last couple in the rehearsal and must be given time to solve the problem with the music. If the problem cannot be solved they must be disqualified from the competition. If such problems occur for the first time during the first round, the same procedure applies so that the affected couple may repeat their performance after the last couple performs in the first round. The Invigilator shall immediately disqualify a couple who experience subsequent technical music problems.

Rule H.7 (Order of Performances)

- 7.1 The order of performances shall be decided by drawing of lots by the Chairman or a person approved by the Chairman, at which draw all couples or their representatives must be present.

At the draw the following persons must be present:

- The invigilator who is appointed by the WDSF
- The Chairman appointed by the WDSF or his or her approved representative.
- 1 Dancer of each couple and/or their representative
- A representative of the organizer to finalize the rehearsal time-table

7.1.1 The same order must be used for the rehearsal and the 1st round of competition.

7.1.2 The order of the final round must be decided by drawing lots again according to the same protocol.



Rule H.8 (Lighting)

- 8.1 All couples must perform in the same lighting conditions in all rounds. All other lighting must be excluded except spotlights.

Follow spotlights may only be used to illuminate every couple in the same way.

- 8.2 Any direct glare of the competing couple has to be avoided by suitable measures such as positioning the spotlights as high as possible.

Rule H.9 (International Showdance Competitions)

- 9.1 International Showdance Competitions are held in the following disciplines:

- a) Standard Showdance
- b) Latin Showdance.

- 9.2 Format

- 9.2.1 A competition may comprise a maximum of two (2) rounds including the final.
- 9.2.2 Competitors must perform the same choreography in the same order and to the same musical arrangement in every round.
- 9.2.3 There must be no pauses during any rounds.
- 9.2.4 The minimum pause between rounds is 30 minutes.
- 9.2.5 The minimum pause between rehearsal and first round is 3 hours.

Rule H.10 (Grades of Competition)

- 10.1 WDSF World Showdance Championships**

9.1.1. Adult and Youth

- a) Types of competition

WDSF World Championships are held:

- aa) In the Standard dances
- ab) In the Latin American dances

- b) Invitations:

Invitations must be sent to all WDSF Member bodies.

- c) Eligibility:

Every WDSF Member body may nominate two couples.

- d) Reimbursement of expenses:

No travel expenses, two nights' hotel accommodations.

See rule B 5 and Appendix



10.2 WDSF Showdance Continental Championships

Adult and Youth

a) Types of competition

WDSF Continental Championships are held:

aa) In the Standard dances

ab) In the Latin American dances

b) Invitations:

Invitations must be sent to all WDSF Member bodies in the relevant continent. For this purpose Israel is counted as a part of Europe.

c) Eligibility:

Every WDSF Member body has the right to nominate two couples.

d) Reimbursement of expenses:

See rule B 5 and Appendix.

10.3 International Showdance Invitational Competitions

a) Except for International Team Matches and Formation Competitions a competition may only be described as an "International Showdance Invitational Competition" if it includes couples from at least four WDSF Member bodies

b) Invitations:

Invitations must be sent only to WDSF Member bodies unless decided otherwise by the Presidium.

c) Reimbursement of expenses:

The reimbursement of participants shall be subject to agreement between the relevant Member bodies.

Rule H.11 (Competition Numbers)

11.1 During the first draw a competition number must be issued to each couple or their representative. The competition number of the couple performing must be displayed so that it is visible to the Adjudicators and the Audience.

Rule H.12 (Announcements)

12.1 The organizer must provide a Master of Ceremonies ("compere") to make announcements during the competitions.

All couples must complete a form in which details of their show and the theme of the show are described. When the couple has been announced they must immediately start their performance and enter the floor immediately to begin their show.



For all preliminary rounds the information must be:

The couples names;

The country they represent;

The choreographer;

The name of the show. (for the final, additional information, if made available by the couple must be given after the choreographer's name, ending the announcement as standard with the name of the show).

Rule H.13 (Adjudication System)

- 13.1 Standard "crossing" (marking) shall be used in the preliminary round. The Chairman of the Adjudicators will issue a listing with the couples who continue to the next round.
- 13.2 During the final each Adjudicator must issue two scores, one for technical merit and one for artistic merit. These scores must be added together to calculate the final score. In case an Adjudicator ranks two couples with an equal final score, the Scrutineers shall rank the couple with the best score for technical merit as the better couple.
- 13.3 The new WDSF Adjudication System must be applied for the final round.
- 13.4 A Showdance consisting of more than three dance-rhythms has a higher Technical merit than a Showdance consisting of only three dance-rhythms, as it is technically more difficult.

Rule H.14 (Props/Accessories/Stage Decoration)

- 14.1 No props, accessories, or stage decoration are permitted at any time before, during or after the performance.

Rule H.15 (Dress and Costume)

- 15.1 **WDSF Dress Regulations** apply to all competitions held under this **Rule**.
- 15.2 The choice of dress and/or costume for man and lady should suit and complement the theme of the show.
- 15.3 Makeup and hair styling for man and lady can suit and complement the theme of the show.

Rule H.16 (Chairman and Invigilator)

- 16.1 Chairman and Invigilator

A WDSF Invigilator and a WDSF Chairman must be appointed by WDSF to chair each competition, to supervise and monitor the organizer's adherence to the **Rules**, and to disqualify any couple who break any **WDSF Rules**, regulations or codes or contravene any WDSF policy or Operating Policy.

- 16.2 The organizer must provide a camera operator, an up-to-date video camera, and a screen and facilities for slow-motion and still-picture viewing for the invigilator, only for World and Continental Championships.



16.3 Every performance in every round, including rehearsals, must be recorded for use in checking for violation of any **WDSF Rules**, regulations or code or contravention of any WDSF policy or Operating Policy and as proof of violation or contravention in case of disqualification.

16.4 Disqualification

Any violation of these **Rules** in a competition by either athlete in a couple may lead to immediate disqualification of that couple.

In case of a disqualification a detailed report signed by the WDSF invigilator and WDSF Chairman, including the video recording of the performance as proof of violation of the **Rules** or other reason, shall be sent to the WDSF Sports Director not later than 1 week following the conclusion of the competition.

16.5 Final Decision

In any case in which these *Rules* are silent, incomplete or uncertain, the Invigilator's decision shall be final.

X. Rules for Chairmen's and Adjudicators Licences

Rule X.1 (WDSF Adjudicators Licences)

- 1.1 The holder of a valid WDSF "A" Adjudicator's license may adjudicate any WDSF granted competitions or formation competitions of all age groups provided s/he also concurrently holds the highest level of formation adjudicator's licence issued by his/her governing WDSF Member body with an Education and Examination system approved by the WDSF Education Commission.
- 1.2 Every valid and existing WDSF Adjudicator's Licence granted before June 15, 2014 is a WDSF "A" Adjudicator's licence.
- 1.3 The holder of a valid and existing WDSF "A" Adjudicator's Licence may judge DanceSport at all levels of corresponding competitions in the WDSF DanceSport system.
- 1.4 The holder of a valid and existing WDSF "B" Adjudicator's Licence may judge national level competitions of WDSF member federations up to and including the WDSF Open competitions. *Member body with their existing licensing system may continue to license their adjudicators for National level competitions.*

Rule X.2 (Applications for WDSF Adjudicators Licences)

- 2.1 An applicant for any WDSF Adjudicators Licence must be licenced or approved to apply for a WDSF Adjudicators Licence by his or her governing WDSF Member body.
- 2.2 Under these **Rules** a Chairman (non-voting) or an Adjudicator is from a country if s/he holds a valid and subsisting WDSF Licence issued by WDSF at the request of that country's Member body and is either a citizen of that country or resided in that country for at least 183 days during the twelve month previous to the date on in which the relevant competition is produced.



Rule X.3 (Granting WDSF Adjudicators Licences)

- 3.1 A WDSF "B" Adjudicator's license may be issued by the WDSF Sports Director to an applicant through the applicant's WDSF Member body. The applicant must meet the conditions spelt out on the WDSF "B" Adjudicator's application form with conditions predetermined by the WDSF Presidium.
- (a) after the adjudicator has attended two (2) WDSF Adjudicators' congresses;
 - (b) after the adjudicator has passed the WDSF General Knowledge Test;
 - (c) after the adjudicator has passed the WDSF English comprehension examination, and
 - (d) after the adjudicator has proved s/he has adjudicating experience which is satisfactory to the WDSF Technical Commission.
- 3.2 After June 15, 2014, a WDSF "A" Adjudicators Licence may be issued by the WDSF Sports Director only to an adjudicator who:
- (a) has held a valid and subsisting WDSF "B" Adjudicators Licence for at least one (1) year;
 - (b) fulfills the requirements for a WDSF "B" Adjudicators Licence and
 - (c) attends and successfully completes the "WDSF "A" Adjudicators Course of Study and Training" prescribed from time to time by the WDSF Academy.

Rule X.4 (Use of WDSF Licences)

- 4.1 The licence holder may use his/her licence, only s/he:
- 4.1.1 is a member of or is registered by an WDSF Member body
 - 4.1.2 is at least 21 years old
 - 4.1.3 has an "active" status license
 - 4.1.4 An Athlete who previously has a WDF Adjudicator's license can only act as adjudicator after reactivating his/her license by informing the Sport Director in writing at least 6 months in advance prior to judging a competition.
 - 4.1.5 A licence can only be granted to a successful applicant who is an athlete not earlier than 1 year after his/her retirement from any dance sport competitions

Rule X.5 (Suspension or Revocation of WDSF Adjudicators Licences)

- 5.1 The Presidium may suspend or revoke the Licence of a WDSF Adjudicator who contravenes the *WDSF Competition Rules* or the *WDSF Adjudicators Code of Conduct*



Y. Rules for Complaints and Objections

Rule Y.1 (Complaints)

- 1.1 Complaints within the scope and framework of the **WDSF Competition Rules** must be addressed to the WDSF Sports Director.

Rule Y.2 (Objections)

- 2.1. Objections to alleged breaches of these **Rules** during competitions must be handled as follows:
- 2.1.1 In couple competitions one partner, or in formation team competitions the team captain, may submit an Objection in writing with the Chairman before the start or after the end of every round.
- 2.1.2 The Chairman must accept any Objection made according to paragraph 2.1.1 and must make a decision to sustain or overrule the Objection, which decision shall be final:
- 2.1.3 Every Objection and corresponding decision must be noted in the Chairman's Report.
- 2.1.4 If any of the procedures for handling an Objection in this Rule Y.2 is not followed, only the WDSF Member body which the couple or formation team represents may submit the same Objection together with supporting reasons in writing to the WDSF Office.
- 2.2 The WDSF jurisdiction makes a decision on the protest.

Z. Final Regulations

Rule Z.1 (Infringements)

- 1.1 The Presidium may impose penalties for breaches of these **Rules**.
- 1.2 Any activity which is contrary to basic principles of fairness, or any incitement to or aiding and abetting a breach of these **Rules**, constitutes a breach of these **Rules**.

Rule Z.2 (Changes in the Competition Rules)

- 2.1 Changes to the **WDSF Competition Rules** are the responsibility of the WDSF General Meeting.



Appendix

Dress regulations
Reimbursement of expenses (B 5)
Rules for Competition Number Cards
Rules for Hip Hop Competitions
Rules for Salsa Competitions
Adjudicators Code of Conduct
Athletes Code of Conduct

Marco Sietas
Sports Director

Michael Eichert
Member of the Technical Commission (Sport)



Recognised by the IOC · Member SportAccord, ARISF, IWGA and IMGA



Appendix WDSF Dress Regulations

These *Regulations* are part of the *WDSF Competition Rules* by reference in Rule E.10.

Authority and Applicability

These Dress Regulations apply to all competitions granted by WDSF and according to the decision of the WDSF Annual General Meeting, form part of the competition rules of all WDSF Member bodies provided always that WDSF Member bodies may impose additional dress restrictions at their own discretion for national non-WDSF-named events.

The WDSF Presidium retains the authority to impose specific additional or general Dress restrictions or otherwise amend or allow exemptions, for specific events.

GENERAL

1. Female athletes may not wear shorts, culottes or leotards alone but they can be worn with a skirt. Female Athletes must wear a skirt, dress or long trousers. Skirts and dresses must create Characteristic shape for each discipline (ST and LA) (shape area). In Standard Dress the lady's or girl's dress must have a long skirt which at minimum covers both her knees; if the skirt is split it must not be split higher than the knee. In Latin Dress the lady's or girl's dress must have a skirt made of fabric, fringe, feathers, beads or any other suitable material, and can be split or open on the sides, provided always that the skirt must completely cover the panties in front and in the back when standing still.
2. An athlete's costume must cover the intimate parts of that athlete's body ("the intimacy area").
3. A lady's or girl's dress and makeup must be appropriate for her age and the level of competition which is being danced.
4. In order to present a more modern and up-to-date image of DanceSport, a suit jacket with collared shirt and tie, or a vest with collared shirt and tie is recommended for the Junior II, Youth, Adult and Senior age groups.
5. Athletes may not use religious symbols as decoration or decoration jewellery but may use religious symbols as part of their personal jewellery.
6. The Chairman has full authority to require any athlete to remove an item of jewellery or dress at any time if in the Chairman's opinion that the item of jewellery or dress poses a potential danger to that athlete or to other competitors.



Recognised by the IOC · Member SportAccord, ARISF, IWGA and IMGA



7. An athlete may compete wearing a costume which is required in a lower category.
8. The Chairman may suspend from competition any athlete who fails to comply with these guidelines or fails to comply with the Chairman's directions at a competition, and may direct the Scrutineer not to record the marks given to such an athlete in any competition in which the athlete fails so to comply.

Good Taste Rule

Any use of material or colour or construction or other contrivance that gives the appearance of non compliance with these dress rules, even though there is no breach of the literal wording of these rules, will be a breach of these rules if so determined by the Chairman of Adjudicators.

SANCTIONS

If a couple is not dressed in accordance with this Dress Regulation and receives a warning from the Chairman of adjudicators, they must comply with the regulation or face disqualification

IMMEDIATELY BY THE CHAIRMAN of the WDSF Sports Director, if present. The Presidium can impose additional sanctions including suspension from competitions for repeat offenders.

DEFINITIONS OF TERMS

No restriction (NR) – there are no restrictions in this matter

Not allowed (NA), Only allowed (OA),

Intimacy area (IA) – body zones, which must be covered by non transparent materials or transparent materials lined with non transparent materials. If skin colour is used in an athlete's costume, it must be SwD.

Rules

For the Female partner:

- tangas are **NA**.
- skin colours panties are **NA**.
- Breasts **must** be covered
- the distance between bra cups **must** be **less than 5 cm**.

Shape area (SA) – minimum area which **must** be covered. Transparent materials are allowed in these areas, any colour is allowed.

Basic material – creates shape of the dress

- with light effects (metallic, glitter, sequins, ...)
- without light effects



Recognised by the IOC · Member SportAccord, ARISF, IWGA and IMGA

Decoration – anything fixed on the basic material, hair, skin:

- with light effects (rhinestones, sequins, beads, pearls, ...)
- without light effects (feathers, flowers, bows, fringe, lace applications, ribbons, ...)

Tie clips, studs, cufflinks, buckles are not defined as decorations.

Hip Line (HL) – panties top line (height)

= straight horizontal line, the top of the cleft or line between buttocks muscles (intergluteal line) **must not** be visible.

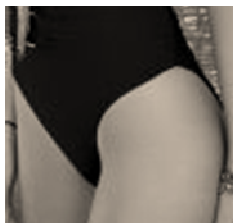
Panty Line (PL) – panties bottom line (height)

- o back side – whole buttocks are covered
- o in the front – follows line between flexed leg and body

The following illustration shows the minimum degree of coverage required by this Rule:



The following illustration is an example of a degree of exposure which is not permitted under this Rule:



The distance between HL and PL on the side must be **more than 5 cm**



Recognised by the IOC · Member SportAccord, ARISF, IWGA and IMGA

Man's Top Opening Point (TOP) – point, to which top or shirt can be opened

= centre of the belt buckle or centre of the trousers top line

Colours



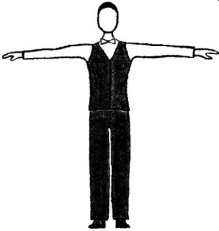
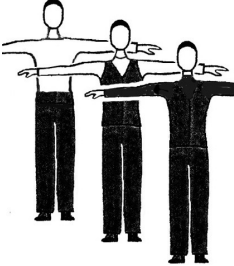
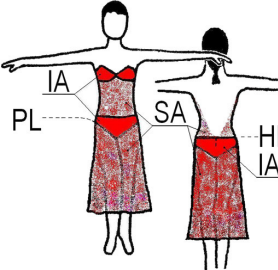
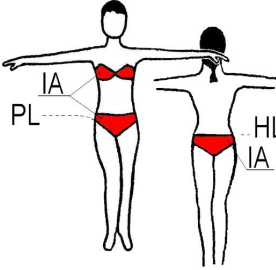
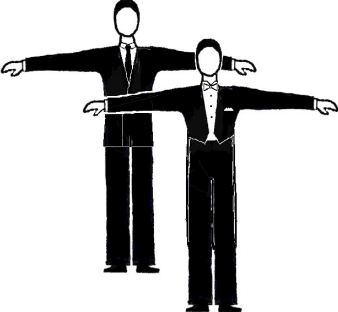
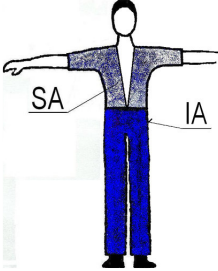
- **black only (Bo)**
- **black (B)** – means black and midnight blue
- **white (W)**
- **skin colour (S)** the same colour as the dancer's skin during the competition (with tan)
- **skin colour with decoration (SwD)**
- **any colour (C)** – any colour including mixed colours
- **any colour except skin colour (CnS)**
- **one colour except skin colour (C1nS)**

Long Sleeves/ed (LS) – length to the wrist, rolled up sleeves is NA

Make-up – includes face make-up, artificial tan, artificial nails, and artificial eye lashes.

Decoration jewellery – jewellery designed to be a part of a dance dress

1. DANCE DRESS – Only Allowed

Partner Disc.	Male		Female	
	ST	LA	ST	LA
Juvenile	<p>W LS shirt Bo trousers Bo tie/bow tie</p>  <p>cuts and details – see appendix I</p>		<p>W blouse leotard or T shirt Bo skirt</p> <p>simple C1nS dress + panties</p> <p>C1nS leotard with same colour skirt attached</p>  <p>cuts and details – see appendix II</p>	
Junior I	<p>W LS shirt or W/Bo LS polo neck top Bo vest optional Bo trousers W bow tie to be worn with dress shirt B tie to be worn with plain shirt</p> 	<p>C shirt/top (tucked in or outside) TOP-breastbone CnS trousers</p> 	<p>Competition dress JI – CnS others – C</p> 	<p>Competition dress JI – CnS others – C</p> 
Junior II Youth Adult Senior	<p>B Jacket suit (B trousers) B jacket W shirt B tie Or W tail shirt W bow tie)</p> <p>B Tail suit (B trousers) B tails W waistcoat W tail shirt W bow tie)</p> 	<p>C Shirt/Top CnS trousers</p> 	<p>two piece dresses NA</p>	<p>Top and trunk must not be only bikini</p>

2. DECORATIONS, LIGHT EFFECTS

Partner Disc.	Male		Female	
	ST	LA	ST	LA
Juv	Any decorations – NA Basic materials with light effects - NA		Any decorations – NA Basic materials with light effects - NA	
Jun I			Decoration with light effects – NA (Decoration without light effects is allowed). Basic materials with light effects – NA	
Jun II – Sen				

3. SHOES, SOCKS, TIGHTS

Partner Disc.	Male		Female	
	ST	LA	ST	LA
Juv	Heel: may be max 2,5 cm B socks must be worn		Heel: block, may be max 3,5cm C short socks are allowed Tights: skin colour - OA , mesh - NA	
Jun I	Shoes: NR		Heel: may be max 5 cm short socks are allowed tights: mesh - NA	
Jun II – Sen			NR	

4. HAIRSTYLES

Partner Disc.	Male		Female	
	ST	LA	ST	LA
Juv	If the hair is long it must be worn in a pony tail		Decoration and coloured hairspray - NA	
Jun I			Decoration with light effects and coloured hairspray – NA (Decoration without light effects are allowed)	
Jun II Sen			NR	

5. MAKE-UP					
Partner Disc.	Male			Female	
	ST	LA	ST	LA	LA
Juv, Jun I	Make-up - NA				
Jun II – Sen	NR				

6. DECORATION JEWELLERY (not personally jewellery)					
Partner Disc.	Male			Female	
	ST	LA	ST	LA	LA
Juv	Decoration jewellery - NA				
Jun I	Decoration jewellery with light effects – NA (Decoration jewellery without light effects are allowed)				
Jun II – Sen	NR				

Appendix 1: Juvenile Male Dress

Top

- plain long sleeved shirt or polo neck top
- shiny or patterned materials - **NA**
- shirt wing collar - **NA**
- rolled up sleeves -**NA**
- must be tucked in

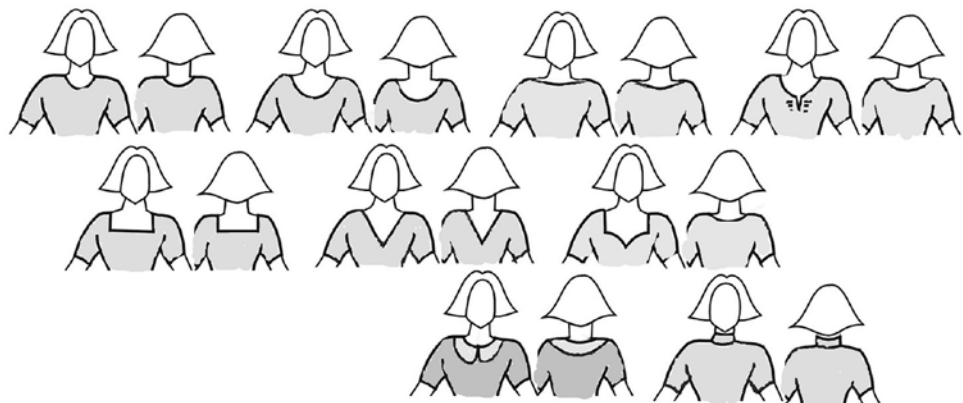


Trousers

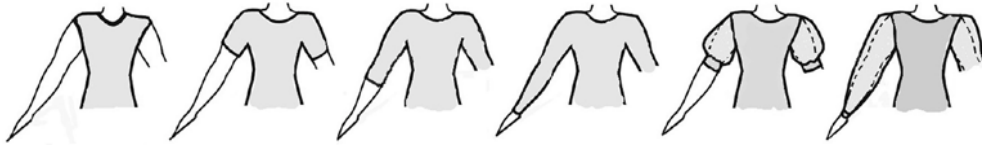
- shiny or patterned materials - **NA**
- side satin stripe allowed

Appendix 2: Juvenile Female Dress

A. Necklines – allowed cuts, others - **NA**:

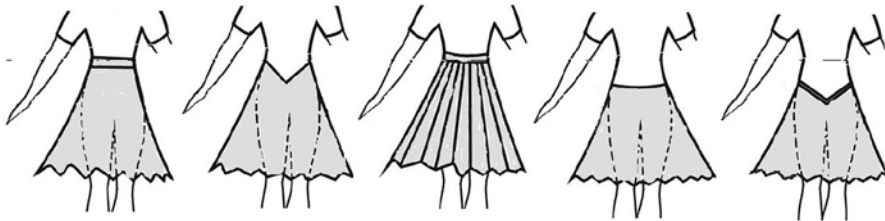


B. Sleeves – allowed cuts, others - NA:

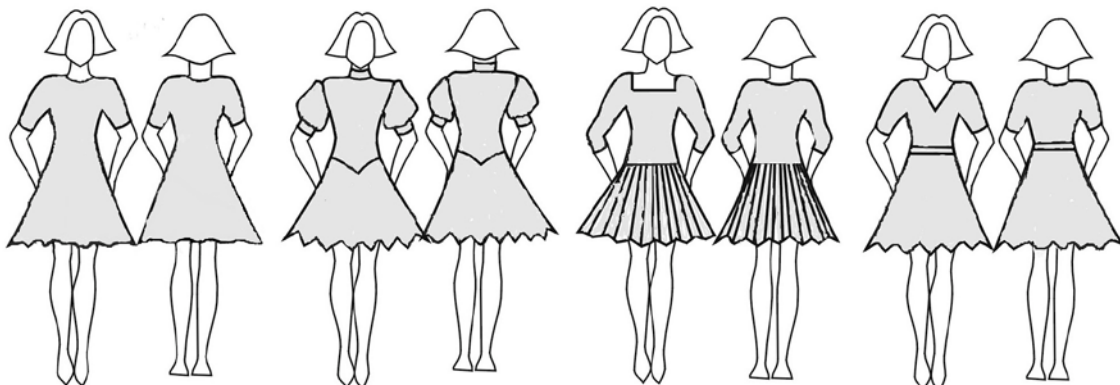


C. Skirts:

- plain or pleated, made of minimum 1 to maximum 3 half circles - **OA**, one simple circular underskirt allowed, bigger underskirt - **NA**.
- frills on the skirt or the underskirt, boning, soft boning or fishing line used in the hem of the skirt – **NA**
- length **must not** be more than 10 cm above the knee and not longer than just below the kneecap.
- allowed cuts, others - **NA**:



Examples:



RULE B 5

Reimbursement of expenses

The minimum reimbursement of expenses to competition couples, chairman and adjudicators for competitions covered by RULE E.4 will be fixed by the Presidium. Members will be notified of the amounts in advance.

•CHAIRMEN and ADJUDICATORS:

Travel expenses: 1st class rail fare home-competition-home, or economy air fare up to a maximum of 2'500,00 SFR in a convertible currency. Full advantage must be taken of weekend or similar tariffs

Accommodation: Hotel accommodation with breakfast for two nights. A lumpsum of 200,00 SFR (Adjudicators), 250,00 SFR (Chairman) must be paid in convertible currency.

• COMPETITION COUPLES:

Travel expenses: No compulsory reimbursements. Organisers may make payments toward expenses at their discretion.

Accommodation: Hotel accommodation with breakfast for two nights. A lumpsum of 130,00 SFR must be paid for all couples, except in senior age groups, in convertible currency.
In Senior I Standard and Latin WDSF Championships one night hotel with breakfast is the minimum reimbursement.
In Senior I Ten Dance, Senior II, Senior III and Freestyle Open WDSF Championships all couples of the quarter final get a lumpsum of 100 Euro.

• FORMATION COMPETITIONS

Travel expenses: No compulsory reimbursements. Organisers may make payments toward expenses at their discretion.

Accommodation: Hotel accommodation for two nights with breakfast must be paid to each formation team (20 persons/team) plus 25 participants' tickets.

Int. Invitation Comp.: The reimbursements of participants shall be subject to agreement between the WDSF Member Bodies concerned.

WDSF WORLD RANKING TOURNAMENTS

**Travel expenses and
Accommodation:**

No compulsory reimbursements. Organisers may make payments toward expenses at their discretion.

**There are special conditions for the WDSF
Grand Slam
Series published in advance by WDSF.**

Entry fees for couples:

The WDSF member federation of the organising country has to decide about the amount and to publish the entry fees in advance.

Prize Money

There are special conditions for the WDSF World Open, listed at Regulations of World Ranking Tournaments:

[http://www.worlddancesport.org/Rule/Competition/
General/Regulations World Ranking Tournaments](http://www.worlddancesport.org/Rule/Competition/General/Regulations_World_Ranking_Tournaments)

Appendix Rules for Hip Hop Competitions

Rule 1 (Categories and Age Groups)

- 1.1 The categories of Hip Hop are: Solo male, Solo female, Duo, Small Group and Formation.
- 1.2 Age Groups:
Junior (I and II) reach 12 up to 15, birthday in the calendar year. Adult: Reach 16 up to 34, or more, birthday in the calendar year.

Rule 2 (Solo Male, Solo Female and Duo)

- 2.1 Duration of Performance: Organizer's music 1 minute.
- 2.2 Tempo: 27 - 28 bars per minute (108 - 112 beats per minute) (downbeat, more groove).
- 2.3 Characteristics and Movement: Hip-Hop includes different new dance styles, such as Hype Dance, New-Jack- Swing, Jamming, etc., adding creative elements such as stops, jokes, flashes, swift movements, etc. Some Electric Boogie movements can be performed but should not dominate. Hip-Hop is mostly danced on the eighth notes with a typical bounce, or jumping action (New-Jack-Swing).
- 2.4 Acrobatic Movements: Permitted, but should not control / dominate the performance.
- 2.5 Lifts: Not permitted.
- 2.6 Stage Props: Not permitted.
- 2.7 Special Note for Duos: Both dancers should dance together, not only for themselves or one by one. Their performance should include synchronized steps.
- 2.8 Procedure of Competition: WDSF Competitions Format will be used. Solo dance will be used in the final round only.

Rule 3 (Small Groups)

- 3.1 Length of Exhibition: minutes 2&30 seconds minimum to 3 minutes maximum.
- 3.2 Tempo: 27 - 28 bars per minute (108 - 112 beats per minute), downbeat, groove. Dancers of each group dance together, two or three at a time. In final round they perform one by one. Musicality, (rhythm, breaks), dance variety and originality, together with well-done and well- performed stage and individual choreography, must be highly evaluated. It is very important to present harmony of music, dance and costume, which should underline the special Hip- Hop character.
- 3.3 Small group consist of 4 up to 8 athletes.

- 3.4 Lifts: Not permitted.
- 3.5 Stage Props: Not permitted.
- 3.6 Groups must be judged as a whole. Solo parts may be performed but must not control / dominate.
- 3.7 All other rules are as outlined under HIP HOP: SOLO MALE / FEMALE, DUO.

Rule 4 (Formations)

- 4.1 Formations dance to their own music.
- 4.2 Length of Exhibition: 2 minutes&30 seconds minimum to 3 minutes maximum.
- 4.3 Tempo: Tempo for Hip Hop Formation cannot be more than 30 bars per minute (120 beats), there is no limit down. However, it is allowed to be out of this tempo range for a maximum of 30 seconds.
- 4.4 Music: Must be typically Hip Hop as it is currently known in the Hip Hop scene, including break beats.
- 4.5 Formations must be judged as a whole. Solo parts may be performed but must not dominate.
- 4.6 Lifts: Permitted.
- 4.7 Stage Props: Not permitted.

Appendix Rules for Salsa Competitions

Rule 1 (Categories and Age Groups)

- 1.1 A couple consist of a male and female partner.

Rule 2 (Music)

- 2.1 Music must be at least 90% salsa. A maximum of 3 different songs or 3 mixes in one routine.
Minimum the 10 % of the routine are allowed to have other music besides salsa can be any music of your choice as long it is on the pre selected song list for the finals.
- 2.2 Rhythm must be maintained consistently throughout the performance. The DJ will not slow down or speed up your CD.
- 2.3 The time allowed is a minimum of one and a half minutes and a maximum of two minutes, including entrance and exit. If routine is longer than two minutes the couple must be deducted percentage points for each second over two minutes.
- 2.4 All competitors of all divisions must bring 2 CDs with their pre-recorded music (ie. in case one CD does not work). One track on each CD only. Song must be edited to end at no more than 2 minutes (it is not the DJ's responsibility to fade out or cut music at 2 minute mark). Please protect your CDs by using covers for each one. Each CD must be identified with your name and the division that you are competing in.
- 2.5 It's allowed to prepare more than one choreographed routine for the various qualifying rounds in case you qualify for the finals.

Rule 3 (Lifts, Tricks, Dips or Drops, Shines and Freezes)

- 3.1 LIFTS
Lifts are not permitted in either category.
A lift is defined as any movement during which one of the dancers has both feet off the floor at the same time with the assistance or support of their partner. Whether the feet are 2 inches off the floor or 10 feet off the floor, this type of assisted movement will still be considered a lift or trick.
If both feet of either dancer leave the ground, points must be deducted.
If any part of the body of either dancer goes above the partners' shoulders, the couple must be disqualified with no refund.
- 3.2 DIPS or DROPS
A maximum of 3 dips or drops allowed. For these skills, at least 1 foot must remain on the floor at all times.
Tricks and trick combination are expected to remain within the confines of salsa timing and/or musicality of the routine.
No tricks permitted during the heated performances.

3.3 SHINES

Shines are permitted although not more than 30% of the performance may consist of shines or side by sides.

3.4 FREEZES.

Dancers cannot maintain an extended stop or freezes position for more than on 8-count (2 measures). Extended freezes cannot happen more than two times in the routine.

Rule 4 (Advertising and Competition Numbers)

4.1 In all WDSF granted DanceSport Competitions advertising by up to four sponsors is allowed on a couple's competition costumes. A man or boy may advertise up to three sponsors, and a woman or girl may advertise only one sponsor. The size of the advertisement may be no more than 40 square cm for each sponsor. Such advertising may only be displayed and located on the waist, chest or sleeves.

4.2 Advertising on the competition number card of the couple is limited to 20% of the size of the competition number on the card.

4.3 The size of couples' competition number cards may be up to DIN A5 plus 20% reserved for advertising. Couples must accept the number card as issued and may not tamper with or reduce the size of the number card.

4.4 The number on any competition number card may not exceed three numerals.

Rule 5 (Rounds and Warm Up)

5.1 THE COMPETITION

5.1.1 The competition comprise FIRST ROUND, SEMI FINAL and FINAL

5.1.2 In the first round the order of performance must be decided before the start of the competition.

5.1.3 36 to 40 couples must dance the semi final. The order of performance must be based on the preliminary rounds score.

5.1.4 10 couples must dance the final. The order of performance must be based on the preliminary rounds score

5.2 THE COUPLES

5.2.1 All of the couples in the Amateur division will dance together to a Warm-up song chosen by the DJ (not to exceed 1:30 minutes).

5.2.2 Each couple will then present their choreographed routine using their choice of music.

Rule 6 (Competition Dress)

6.1 Dresses have to create Characteristic shape for salsa.

6.2 Dresses have to cover the intimate parts of the dancers bodies.

Intimacy area: Body zones, which have to be covered by non transparent materials or transparent materials lined with non transparent materials. Tangas are not allowed. Breast has to be covered. The distance between bra cups has to be less than 5 cm.

6.3 Using of religious symbols as decoration or decoration jewellery is not allowed (This does not apply to personal jewellery)

6.4 It's not allowed to dance with jeans or shorts.

6.5 Male:
Long trousers with Top or Shirt in any colour.

6.6 Female:
The intimacy area has to be covered. It's not allowed dress two pieces. In the panties top line the top of kine between butticks muscles (intergluteal line) must not be visible. In the panties bottom line the whole buttocks are covered, and in the front the follows line between flexed leg and body. The distance between the hip line and the panty line on the side has to be more than 5 cm.

Rule 7 (Judging Criteria)

7.1 MUSIC 40%

7.1.1 Timing 20%

Salsa timing for all divisions of this competition has been defined as "quick-Quick- Slow" as designated by the counts "1-2-3" of each bar or music. Dancers can choose to break on the "1" or the "2". The timing score asks: Was correct rhythm maintained throughout the routine? Were syncopations deliberate and within the acceptable deviations of timing for the dance?

For Salsa divisions, Points will NOT be deducted if you are dancing "on 1" and return by breaking on "5". The same if you are dancing "on 2" and return by breaking on "6". If you were to return on any other beat than that mentioned you will be deducted points.

7.1.2 Musicality 20%

How effectively did the couple utilize the breaks and nuances of their chosen piece of music? Were they in rhythmically in sync with the piece? 20 % of the overall score will be reflected by musicality. Did the couple utilize the breaks and

7.2 TECHNIQUE 20%

Reflected through balance, placement and line. Partners must reflect adequate Latin/salsa "Motion" and "Isolations" as designated by the dance style. Movement should appear to be effortless. These are all reflections of good dance technique.

7.3 DIFFICULTY 10%

What was the level of the turns used in the routine? Were there single footed and multiple turns incorporated? Were spins performed by both dancers or only one? How intricate were the shines? Were there any movements in the choreography requiring exceptional balance, flexibility or strength? Were all movements attempted successfully executed? See below for levels of difficulty.

7.4 CONNECTION / PARTNERING SKILLS 10%

How well did the couple work together as a team? Was there an actual Lead/Follow relationship established? How synchronized was the team during side-by-side movement, shines or turn patterns?

7.5 CHOREOGRAPHY/ORIGINALITY 10%

How well put together was the performance? Did the routine flow easily from one movement to the next? Was there something clever or new that was part of the routine? How musical was it? Did the routine reflect the music chosen?

7.6 APPEARANCE AND SHOWMANSHIPS 10%

How professional and polished did the couple or team appear to be? Did they project to the audience and capture their attention?

Rule 8 (Disqualifying Infractions)

- 8.1 5 points will be deducted from technique for a major fall.
- 8.2 5 points will be deducted from connection/partnering if there is a major misconnection.
- 8.3 No move in which both feet leave the ground at the same time with the assistance or support of their partner, will be permitted.
- 8.4 If both feet of either dancer leave the ground, points will be deducted.
- 8.5 Amount of deduction for each infraction will be 10% of the overall final score.
- 8.6 If any part of the body of either dancer goes above the partners' shoulders, the couple will be disqualified with no refund.
- 8.7 All decisions are final and are to be determined by the Scrutineer and the Head Judge.

Appendix Competition Number Cards

General

Competition Number cards shall have a minimum and maximum size

Characters on Competition Number Cards must be printed in a font permitted in this Appendix.

The font showed below displays clear differences between digits with similar features, e.g. 1 & 7, 5 & 6, 8 & 9. E.g. see below.

The production of the number cards should require minimum effort, using standard fonts and standard printing machines.

Fonts must have a proportional layout, e.g. the digit "1" is much smaller than digit "5". However this Appendix does not fix the width of every digit regardless of the proportional font, because doing so would require too much effort from the number card designer and print shop, because then each digit would have to be fitted individually, rather than using a standard font face.

All word processing software can compress the font used to fit into a given frame, so this technique must be used.

Permitted Colours

The highest contrast can be achieved by using white paper and printed black digits or black paper with printed white digits.

In big competitions it might be needed to use number cards in different colours to support the organization.

In this case the print shall be always black. The colour used for the number cards must always guarantee that the contrast stays as high as possible to allow all officials to read the numbers clearly from every position around the competition floor.

Size of Competition Number Cards

The back of Juvenile and Junior boys is of course much shorter and narrower than those of Youth or Adults.

So two possible sizes are permitted:

Size "small"

13x17cm (without advertising area)

15x17cm (with advertising area)

This size can be used for all WDSF age groups, but is mandatory for Juvenile I & II and Junior I competitions.

Size "large"

15x21cm (without advertising area)

18x21cm (with advertising area)

This size fits only the following WDSF age groups: Junior II, Youth, Adults and Senior.

Number Card – small - without advertising area - 13 x 17cm

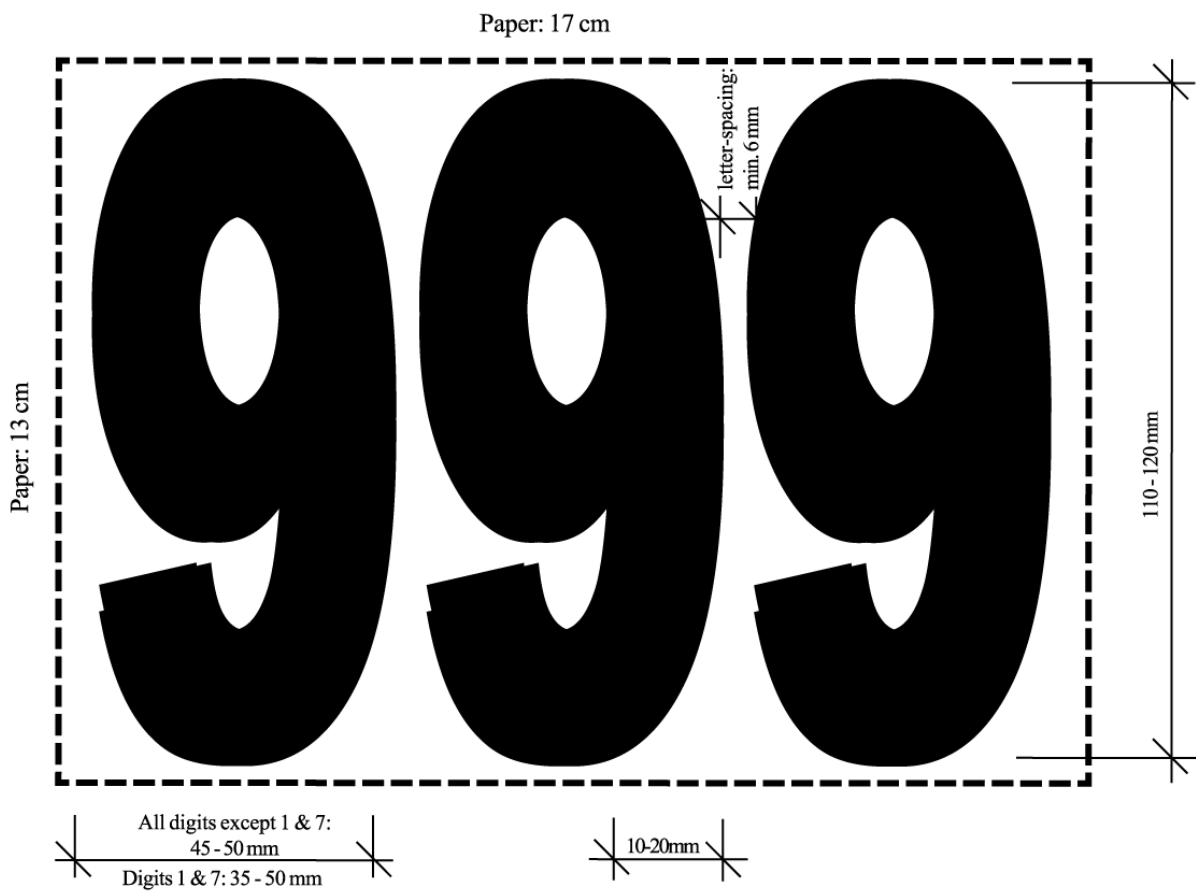
This size may be used for all WDSF age groups and is mandatory for Juvenile I & II and Junior I.

Font: Arial Narrow

Height: 320pt

Width/Scale: 58%

Type Style:
bold



Number Card – small - with advertising area - 15 x 17cm

This size may be used for all WDSF age groups and is mandatory for Juvenile I & II and Junior I.

Font: Arial Narrow

Height: 320pt

Width/Scale: 58%

Type Style: bold



Number Card – small - with advertising area - 15 x 17cm (showing narrow digits 1&7)

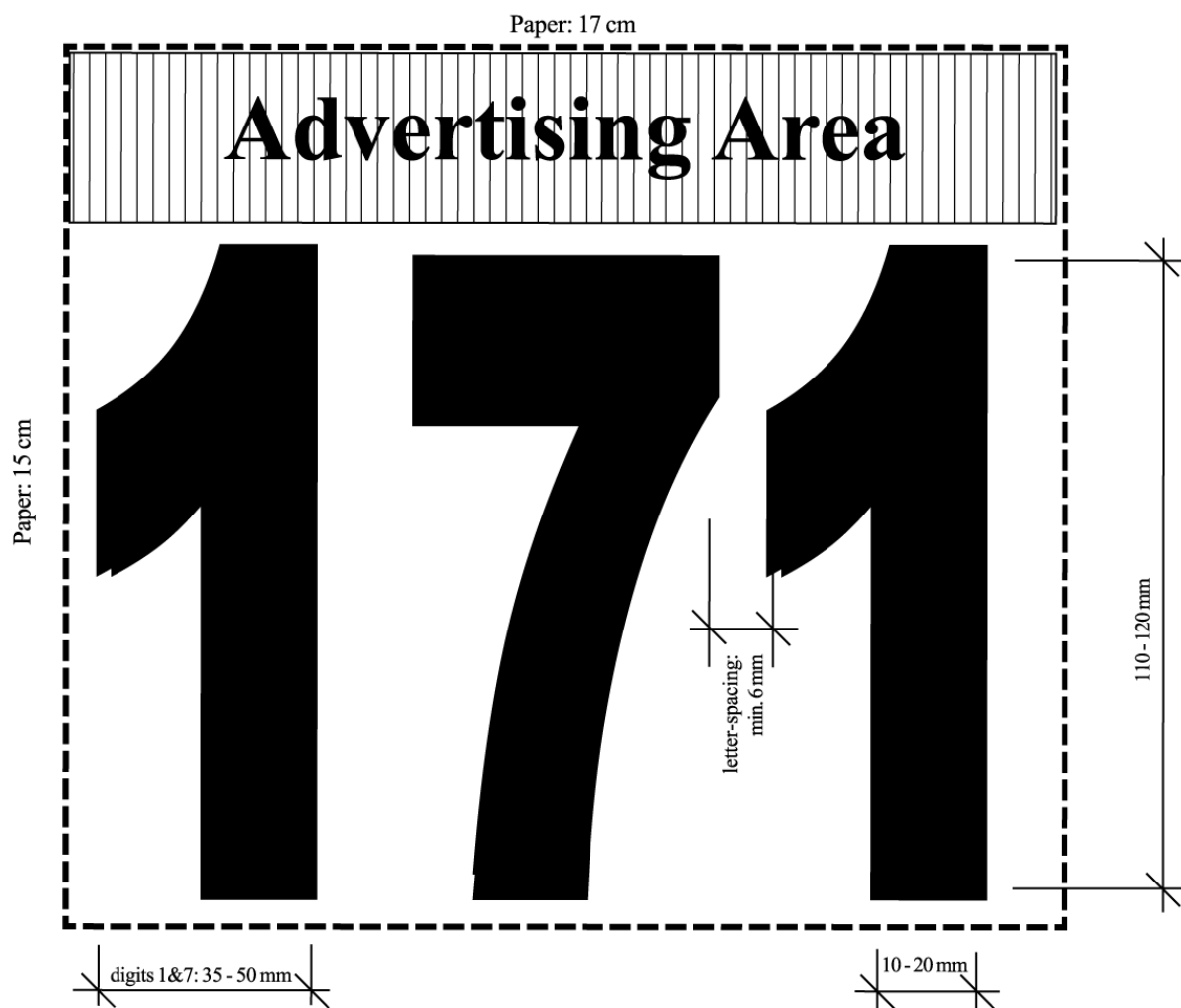
This size may be used for all WDSF age groups and is mandatory for Juvenile I & II and Junior I.

Font: Arial Narrow

Height: 320pt

Width/Scale: 58%

Type Style: bold



Number Card - large –without advertising area - 15 x 21 cm

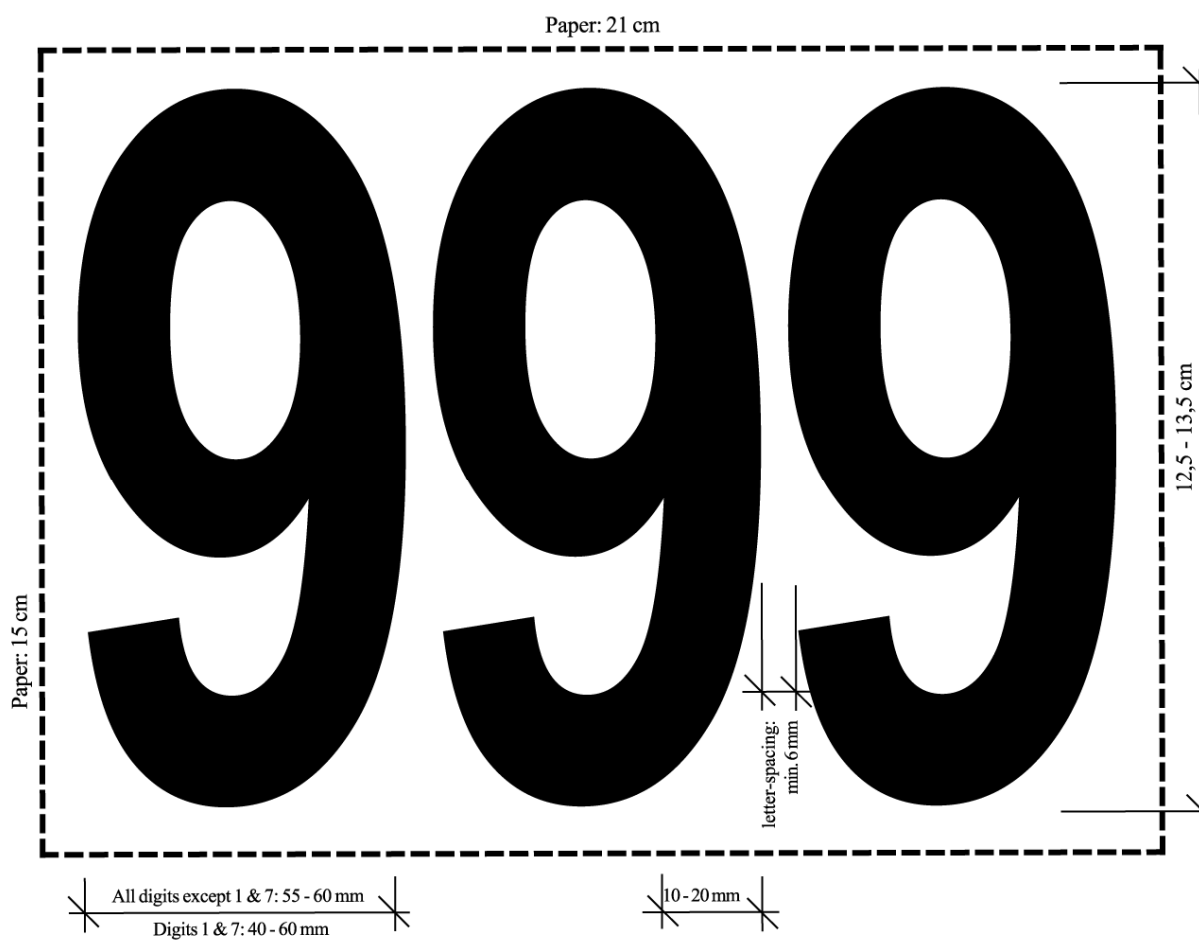
This size may be used only for the following WDSF age groups: Junior II, Youth, Adults and all Senior groups,

Font: Arial Narrow

Height: 380pt

Width/Scale:85%

Type Style: bold



Number Card – large - with advertising area - 18 x 21cm

This size may be used only for the following WDSF age groups: Junior II, Youth, Adults and all Senior groups.

Font: Arial Narrow

Height: 380pt

Width/Scale: 85%

Type Style: bold



Number Card – large – with advertising area - 18 x 21cm (showing narrow digits 1 & 7)

This size may be used only for the following WDSF age groups: Junior II, Youth, Adults and all Senior groups.

Font: Arial Narrow

Height: 380pt

Width/Scale: 85%

Type Style: bold



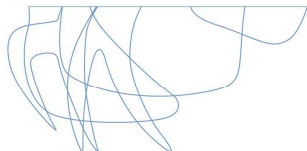
Example digits

Font: Arial Narrow

Width/Scale: 75%

Type Style: bold

1 2 3 4 5
6 7 8 9 0



Operating Policy

Adjudicators' Code of Conduct and Standards of Ethics

Table of Contents

1. Preamble	2
2. Conflict of Interest	3
3. Rules for Adjudicators	3
4. General Behaviour of Adjudicators	6
5. Complaints about Adjudicators during a Competition	7
6. Other Complaints about Adjudicators	8
7. Disciplinary Actions against Adjudicators	9

prepared by
Natasa Ambroz (Slovenia) / Helmut Baumann (Austria) / Antero
Koponen (Finland) / Marco Sietas (Spain)

Amended June 2, 2014



1. Preamble

As we work towards our goal of becoming an Olympic Program sport, it is now more important than ever that we preserve and enhance the reputation upon which the World DanceSport Federation was built. Our reputation demands that we conduct our business ethically and legally, and that our conduct always reflects the values and principles enshrined in the ***Olympic Charter***.

This ***Code of Conduct and Standards of Ethics*** (“the ***Code***”) is intended to provide a framework of standards for conduct and ethics for adjudicators. It has been developed as an Operating Policy of the WDSF Presidium in recognition of the fundamental and overriding responsibility of all adjudicators to maintain the integrity, competence and effectiveness of judging panels as a whole.

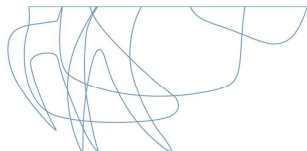
The rules and standards set out in the ***Code*** are intended to assist adjudicators to establish appropriate standards of conduct in order that they have the confidence of their peers, the competitors they are judging, the WDSF and WDSF member federations utilising their services, other sports administration bodies including IOC, and the sports media and general public.

It must be recognised that the ***Code*** cannot anticipate all possible situations in which adjudicators may be called upon to exercise judgement. In all cases, it remains the ultimate responsibility of each individual adjudicator to consider the intent as well as the letter of the standards, which have been set, to conduct himself/herself in an ethical and professional manner, and to ensure all competitors are judged on their merits free from any bias or coercion.

Adherence to the standards reflected in the ***Code*** is essential to WDSF’s future success. All adjudicators must become familiar with the contents of this Operating Policy. WDSF expects every adjudicator to take personal responsibility for complying with the ***Code*** and acting in a manner consistent with WDSF and IOC values and principles.

The ***Code*** applies to all adjudicators and Chairmen (hereinafter referred to collectively as “adjudicators”) licensed by the WDSF.

The ***Code*** may be amended from time to time by the WDSF Presidium.



2. Conflict of Interest

A Conflict of Interest is any interest, relationship, association or activity that is incompatible with an adjudicator's obligations to ensure that all competitors are judged on their merits, free from any bias or coercion.

Conflicts of Interest arise in particular when the personal interests of an adjudicator influence that adjudicator's judgement or ability to act in the best interest of the WDSF, which is the same as the best interest of the competitors.

An adjudicator must adhere to the rules set out in this **Code**, and shall retire from the panel where any potential Conflict of Interest arises.

3. Rules for Adjudicators

- (a) An adjudicator shall not judge in any event and shall retire from the panel, if s/he knows or believes that his/her physical or mental condition does not allow him/her to perform the job properly without any limitations.
- (b) An adjudicator shall not judge any event, and shall retire from the panel, where any person competing in that competition is a member of his/her immediate and extended family, including de facto relationships, or where s/he has a personal relationship to any competitor in the competition which makes it inappropriate for him/her to serve as an adjudicator.

For greater clarity, the words "immediate and extended family" include anyone to whom that judge is related by blood or marriage, to the degree of first cousin or closer, or adoption order, or with whom the judge lives or cohabits.

- (c) An adjudicator who has a personal relationship with an active athlete cannot at any time be accompanied by this athlete in any official area during a WDSF event where he or she is acting as an adjudicator. This includes the hotel accommodation, VIP areas, restaurants and official facilities.

Once the athlete retires from active competition dancing this rule will no longer be applied.



- (d) An adjudicator shall not judge any event, and shall retire from any panel, where any person acting also as adjudicator is a member of his/her immediate and extended family, including de facto relationships, or where she/he has a personal relationship with any adjudicator in the competition which could make it inappropriate for him/her to act as such.
- (e) An adjudicator shall not accept money, awards, articles or things of substantial material value, or favours or promises of any future consideration, whether as gift or as payment for services, from any competitor or organiser, or from any other third party, who may be or may have been affected directly or indirectly by the adjudicator's decision.
- (d) An adjudicator shall not make any false representation in respect of his/her accreditation level or experience and in relation to his/her adjudicators licence.
- (e) Once an adjudicator is engaged to officiate at a particular event s/he can only act as an adjudicator throughout the event and this Code applies to the event as a whole.
- (f) An adjudicator shall not coach, teach, or give any advice to any participating couple during an event at which he/she is judging, and shall not coach, teach or give any advice at any lesson, camp, workshop or other training function which is affiliated in any way with a WDSF-granted competition at any time during the two-week period prior to the start of that competition if s/he has accepted an invitation to adjudicate at that competition.
- (g) An adjudicator shall not threaten to mark a couple in a particular way.
- (h) An adjudicator shall not in any way threaten a couple during the conduct of a competition s/he is judging and in which the couple is competing.
- (i) An adjudicator shall refrain from publicly taking any partisan position in respect of any couple he/she may judge in any competition.



- (j) An adjudicator shall not seek by any means to improperly influence, or to intimidate, another adjudicator.
- (k) An adjudicator who is not a member of the judging panel for an event, shall not discuss with any adjudicator who is a member of the judging panel for that event the merits of the performance of a competitor in that event or any previous performances or results, before the completion of the event.
- (l) An adjudicator shall not discuss the merits of a competitor's performance with the competitor before the end of the event in which s/he is judging.
- (m) An adjudicator shall not seek to influence the outcome of a competition other than by marking all couples in the competition on their merits
- (n) An adjudicator when appointed to judge a WDSF event has to judge strictly according to WDSF rules and policies.
- (o) An adjudicator shall not engage in any conduct that is intended to gain an advantage for any competitor
- (p) An adjudicator shall not falsely claim to officially represent WDSF in any capacity.
- (q) If an adjudicator converses with fellow adjudicators, spectators, competitors or coaches during an event, s/he may not discuss the performance of any couple s/he is judging or any of their previous performances or results, until after the end of the event.
- (r) An adjudicator may not use mobile telephones or portable digital-information devices of any kind on or near to the competition floor during judging, and on any questions arising from this policy the Chairman's decision shall be final.



4. General Behaviour of Adjudicators

Adjudicators shall comply with the following rules of conduct so as to uphold the highest standards of behaviour:

- (a) An adjudicator's behaviour both on and off the dance floor must be consistent with the principles of good sportsmanship. An adjudicator must not behave in a questionable or unseemly manner in public or at any Dance Sport related function or occasion where members of the public (including competitors, spectators and the media) are present in any capacity.
- (b) An adjudicator must be consistent, objective and neutral in his/her decisions. Biased judging undermines the whole basis of competition.
- (c) An adjudicator must not publicly question his/her fellow adjudicators' judgement, honesty or good faith.
- (d) Where an adjudicator is permitted by this **Code** to judge the couples s/he coaches or has coached in the past, the adjudicator should not allow this relationship to influence his/her judgement.
- (e) An adjudicator must maintain and develop his/her judging skills by keeping himself/herself informed on developments in technique and style, and any changes in WDSF rules and policies on judging.
- (f) Where judging responsibilities have been assigned to an adjudicator for a competition, regardless of the status of that competition, the adjudicator shall not consume any alcoholic beverage or recreational drugs before and during any period of the event, until the end of the event.
- (g) An adjudicator shall not otherwise act in any way that may bring the image of WDSF or Dance Sport into disrepute.

It is a basic requirement of the adjudicator's licence that any adjudicator engaged to judge at a competition shall

- (a) Arrive on time at the venue in reasonable physical and mental condition.

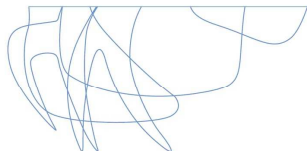


- (b) Report his/her presence to the organiser and Chair of Adjudicators.
- (c) Ascertain the timetable of the competitions.
- (d) Be available to perform the duties of an WDSF adjudicator as scheduled.
- (e) Behave in such a way during the competition as to preserve the good reputation of Dance Sport and the WDSF.

During the conduct of a competition, the adjudicators on the judging panel shall:

- (a) Stand apart from one another and at such locations that they do not interfere with the competitors.
- (b) Move to whatever position is required to see all of the couples.
- (c) Judge independently and not compare notes with the other adjudicators.
- (d) Mark and sign their paper score cards in ink, including their code letter, and initial each and every alteration s/he makes to the score card.
- (e) Not make any attempt to become familiar with names, numbers and nationalities of the participants by using the official programme and with any intermediate results or marks of other fellow adjudicators of the competition before the end of the competition.
- (f) Follow any instruction given by the Chair.
- (g) Concentrate on judging only and not have any communication with the audience, fellow adjudicators or couples and not do anything that might distract him/her, including by the use of any electronic device or camera.

5. Complaints about Adjudicators during a Competition



During a competition the Chair nominated or confirmed by the WDSF is authorized and obliged to observe the compliance of all WDSF licensed adjudicators with the **Code**, whether they be engaged in the competition or not.

Any complaints regarding the breach of **Code** during the competition, should be made by an official representative of an WDSF Member body in writing and shall be addressed to the Chair, provided always that anyone may make such a complaint to the Chair when an official representative of an WDSF Member body is unable or unwilling to do so.

If the Chair has reason to believe that there has been a breach of the **Code** by an adjudicator on the panel of which s/he is Chair, then s/he is empowered and obliged to notify such adjudicator of the complaint against him/her, hear him/her in reply, and then take appropriate action immediately according to the terms of the **Code**.

The Chair shall have the power to reprimand or replace the adjudicator by an appropriate substitute for the remainder of the competition.

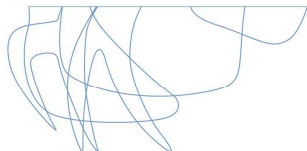
The Chair shall document any incident or observation of alleged or suspected misconduct by an adjudicator, and any reprimand or replacement of an adjudicator, and include it or them in the competition report to the WDSF Sports Director who shall decide whether there is the need to initiate a further investigation. The WDSF Sports Director shall refer each such case to the WDSF Presidium, with or without recommendations, for consideration.

6. Other Complaints about Adjudicators

Any other complaints about an alleged breach of the **Code** after the results of the competition have been announced must be submitted by an WDSF Member body or another person in writing to the WDSF Sports Director.

A complaint shall not be considered unless the following lodgement criteria are met:

- (a) The complaint must be made in writing and signed by the complainant, and must be lodged with the WDSF Sports Director within ten (10) days of the date of the alleged breach



together with any supporting documentation.

- (b) The complainant must specify the full name, address and contact details of the complaining person or persons and must agree in writing to give evidence and to take all steps in its power to require persons with knowledge of the matter of the complaint to be cross examined on that evidence.

If a complaint meets these criteria, the WDSF Sports Director shall forward the complaint to the WDSF Presidium for further consideration. If these criteria are not met, the WDSF Sports Director shall write to the complainant immediately advising that s/he has failed to meet these criteria and inviting a revised complaint that meets these criteria.

Nothing in this rule shall prevent the WDSF Sports Director from initiating an investigation at any time where the WDSF Sports Director believes there has been a breach of this **Code** or any rule or policy of the WDSF, and referring it to the WDSF Presidium for consideration.

The WDSF Presidium shall consider any complaint made under this section. The Presidium may give a complaint lesser weight or no weight based on the degree to which that complaint is based on hearsay rather than direct evidence.

7. Disciplinary Actions against Adjudicators

If an adjudicator

- (a) Manifestly contravenes the **Code**, or otherwise commits gross misconduct;
- (b) Wilfully infringes any of these rules; or
- (c) Is found to have engaged in any conduct which in the opinion of the WDSF Presidium is prejudicial to the interests of WDSF;

then the WDSF Presidium shall have the power to reprimand or impose a disciplinary action on the adjudicator, or otherwise to suspend or cancel or revoke the adjudicator's WDSF license, provided always that no disciplinary action shall be taken unless such adjudicator shall by notice, in writing, be notified of the complaint



against him/her before the Presidium takes any action. The adjudicator has a right to appear before three Members of the Presidium who are chosen by the Managing Committee, to defend his/her case, be represented by another person or send his/her comments in writing, provided always that this right shall not restrict or delay the Presidium from acting prior to such appearance if in the Presidium decides that it is in the best interests of DanceSport to do so. The adjudicator must pay the costs of attending before the Presidium. The Presidium will use its best efforts to help the adjudicator to minimize such costs. All complaints made under this **Code** shall be considered and decided by the Presidium according to its absolute discretion and its decision shall be final, provided always that it shall give written reasons for its decision.

Shawn Tay
WDSF General Secretary



Recognised by the IOC - Member SportAccord, ARISF, IWGA and IMGA



Operating Policy

WDSF Athletes' Code of Conduct and Standards of Ethics

1. Preamble

A good reputation is the foundation of every sport and should be preserved by its federations. In order to continue to enhance the good reputation of DanceSport and its athletes as well as the World DanceSport Federation, the WDSF Presidium has adopted this ***WDSF Athletes' Code of Conduct and Standards of Ethics***, and it shall be binding on all DanceSport athletes in the WDSF DanceSport system around the World.

2. General Conduct of Athletes

DanceSport competition is a pleasure and a privilege, and is based on the Olympic principle of joy through effort. It can be practised by people of all ages and backgrounds.



Athletes occupy a position of trust and are significant role models to their peers and to the world generally. A high standard of good conduct before, during and after any DanceSport competition is required of any athlete who has an WDSF or an WDSF PD competition licence.

An athlete's conduct both on and off the dance floor must be consistent with the principles of good sportsmanship. An athlete participating in DanceSport:

- will always give his or her best performance regardless of any other considerations
- will always be gracious and conduct himself/herself in a sportsmanlike manner, whether in victory or defeat, and in a way that inspires fellow competitors and future competitors to attain the highest level of sportsmanship
- will always compete without the use of prohibited substances and will actively fight against doping, respect WADA and act in the spirit of fair play
- will always respect the property of others, whether it is private property or public property
- will always respect his or her dance partner, other competitors, spectators, organizers, and officials
- will not engage in discriminatory conduct
- will not engage in violent or abusive conduct whether verbal or physical or in sexual harassment or abuse of any kind
- will comply with the rules, regulations, policies and decisions of WDSF, the WDSF Presidium and WDSFs Commissions



- will at all times act as an exemplary ambassador for DanceSport, WDSF, and his or her own country

An athlete must not behave in a questionable or unseemly manner in public or at any DanceSport competition or DanceSport-related function or occasion where members of the public (including athletes, spectators and the media) are present in any capacity.

All members of the DanceSport Community, whether coaches, organizers, fellow athletes or others, have an obligation to encourage high standards of good conduct, and discourage unacceptable conduct, by athletes.

3. Rules of Conduct

Athletes who enter any World Ranking tournament, Cup, Championship or Grand Slam competition granted by WDSF, are governed directly by the WDSF Statutes and all other Rules and policies adopted by WDSF. WDSF can take all appropriate action to ensure that any athletes' conduct is in the best interests of DanceSport.

No athlete may participate in a DanceSport competition or event which is not listed on the official WDSF Competition Calendar (any such non-listed event being a "**Non-WDSF Event**") unless s/he has obtained advance written consent for such participation from the WDSF.

The WDSF may consider granting such consent only if it is satisfied that (i) the organisation ultimately responsible for the regulation of such Non-WDSF Event not only has in place Anti-doping rules which comply with the **World Anti-Doping Code** but which also implement an effective Anti-doping programme based on such rules and (ii) the participation of the relevant athlete(s) in such Non-WDSF Event will not disrupt the organisation or staging of an event listed on the official WDSF Competition Calendar.



The grant or refusal of such consent shall be within the absolute discretion of the WDSF and grounds need not be given in the event of refusal; for the avoidance of doubt, the WDSF may decide to refuse consent for reasons unrelated to Anti-doping and/or the disruption of an event listed on the official WDSF Competition Calendar. In the event that the WDSF does not respond to a given request, it shall be deemed that such request for consent has been refused.

The WDSF may maintain, and publish on its website, a register of Non-WDSF Events which it deems not to satisfy the criteria set out at (i) and (ii) above (any such event being a "**Specified Event**"). Athletes should not requesting consent to participate in Specified Events as such consent will not be granted under any circumstances.

Requests for consent to participate in a Non-WDSF Event (which is not a Specified Event) shall be sent by e-mail no later than two months prior to the commencement of such event to the WDSF Sports Director at the current address shown for him or her on the WDSF Web Site.

Athletes must sign an acknowledgement of WDSFs jurisdiction over them if they are asked to do so.

An athlete must not make any false statement in relation to his or her competition licence.

An athlete must not make any false statement in relation to his or her application to compete in any competition.

An athlete must never threaten any person immediately before, immediately after, or during any competition in which s/he is competing, including by using body language, facial expressions, orally or in writing, in order to improperly affect the outcome of a



Recognised by the IOC - Member SportAccord, ARISF, IWGA and IMGA



competition.

An athlete must never seek by any means to improperly influence, or to intimidate, any adjudicator, athlete or other person involved in any way in a competition.

An athlete must not publicly question an adjudicator's judgement, honesty or good faith, except in writing addressed in good faith to authorities of competent jurisdiction.

An athlete must dance at competitions in which s/he is registered to compete, or else give reasonable prior notice in writing that s/he will not compete.

An athlete must arrive on time at the competition venue in reasonable physical and mental condition.

Subject only to exceptions permitted by law, or innocent accident or mistake, an athlete must not cause damage to property, or take property without lawful excuse, or injure any person, before, during or after a competition.

4. Complaints

Complaints are received, reviewed and decided by either the WDSF Presidium, a responsible WDSF Presidium Member or by any other official responsible to deal with the matter (e.g. the Chairperson of a competition)



Decisions which are made about complaints may be appealed to the WDSF Disciplinary Council, according to the **WDSF Disciplinary Council Code**.

Any urgent complaints by athletes about adjudicators or any other aspect of a competition must be addressed only to the Chair during the competition.

Complaints are decided by WDSF and its Members based on the facts, by applying the relevant governing competition Rules, and not on subjective grounds.

Unless it is urgent, a complaint:

- must be in writing
- must be completed with a name, address (postal and email), and contact numbers, and must be dated and signed
- must be more than an accusation
- must not be made on condition of anonymity, or on any other condition
- must be clear and specific, including dates, places, etc., and giving reasons
- may be supported by documents, photographs, names, and contact information of witnesses
- must be made within twenty (20) days of the occurrence of the act or omission which is the subject of the complaint, or within twenty (20) days of the time at which the complainant became aware of the same act or omission, provided always that no



Recognised by the IOC - Member SportAccord, ARISF, IWGA and IMGA



complaint may be submitted more than 90 days after the act or omission which is the basis for the complaint.

It is unfair, unsportsmanlike, and unacceptable to make an oral complaint (unless it is urgent and addressed to the Chair during a competition), or to circulate anonymous complaints.

5. Sanctions

Any athlete, whose conduct is determined by the Presidium to be contrary to this Code, is subject to penalties, including but not limited to one or more of the following penalties: an order for compensation (if property is damaged or destroyed and the costs should be reimbursed); disqualification from a competition; a temporary suspension from the right to compete; and in case of recurrent or very serious misconduct a permanent suspension from the right to compete.

The minimum penalty considered by the Presidium will usually be a 3-month suspension from the right to compete.

In general the first sanction of any conduct contrary to this Code will be a letter of reprimand. In more serious cases the Presidium may apply a more severe level of sanction, even for a first offence or act of misconduct. For example, participation by an athlete in a Non-WDSF Event without obtaining the requisite consent shall constitute a serious case.

Shawn Tay
WDSF General Secretary